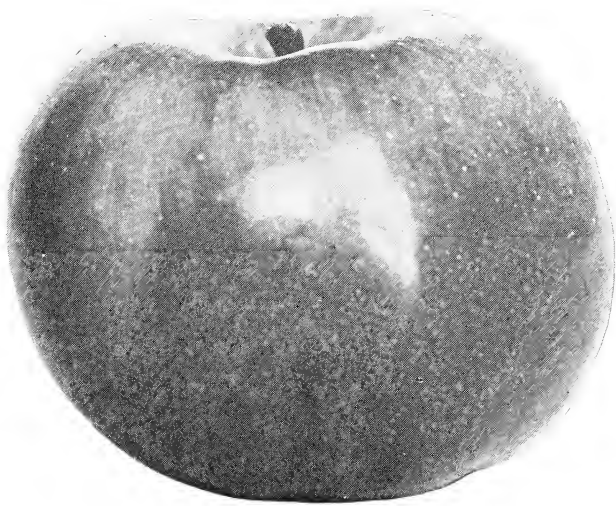


Historic, Archive Document

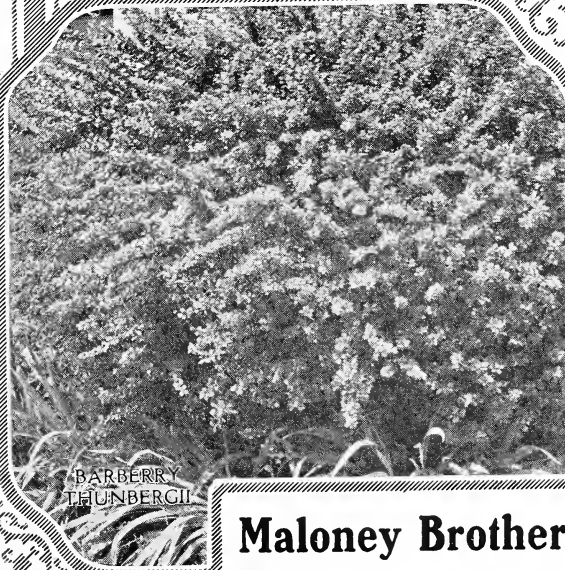
Do not assume content reflects current scientific knowledge, policies, or practices.

FRUIT & SHRUB BOOK

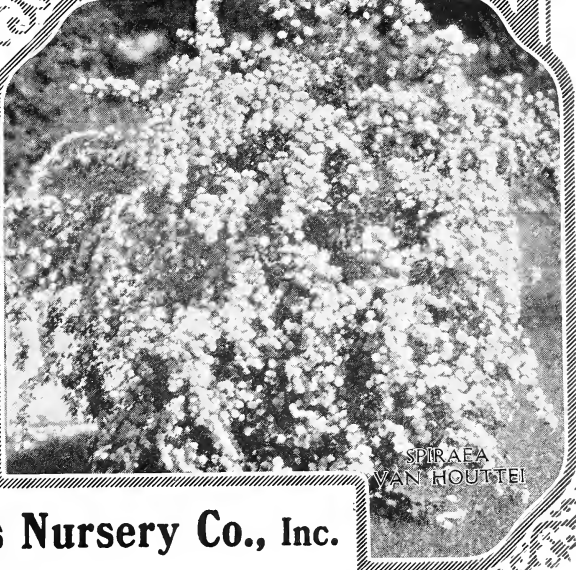
FALL 1926



CORTLAND



BARBERRY
THUNBERGII



SPIRAEA
VAN HOUTTEI

Maloney Brothers Nursery Co., Inc.

DANSVILLE, N. Y.

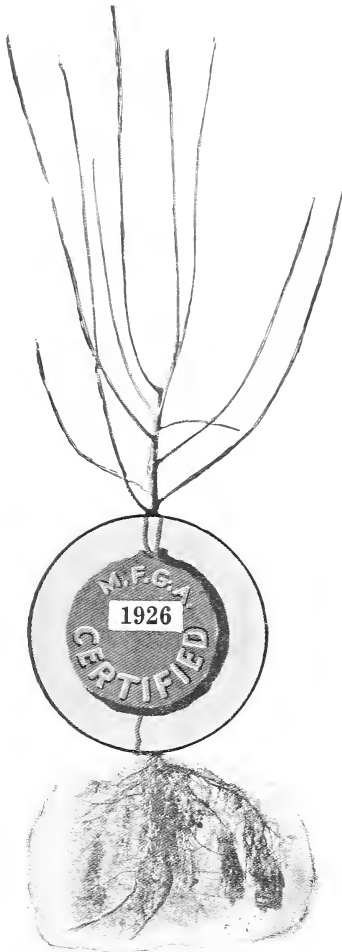
Certified Fruit Trees

Maloney Rigid Guarantee Now Backed Up by Certification
Of Massachusetts Agricultural College

WHEN you set out an orchard to Cortlands, Baldwins or Greenings or some other desirable variety of apple or a carefully planned combination, you want to be sure of your results without waiting to see what happens when the trees begin to bear.

This year, through an arrangement with Dr. J. K. Shaw of the Massachusetts Agricultural College, Certification Agent for the Massachusetts Fruit Growers Association, Inc., we have had certified 75,000 Apple trees as being true to name. This measure is for the protection of our customer fruit growers who take enough interest in their business and the condition of their orchards to pay a few cents more than the price of regular stock to cover the cost of certification.

All our fruit trees are budded from bearing trees and are covered by the same guarantee as the Certified Apple trees but at no additional expense.



Above is a photograph showing certified Apple Tree bearing the seal.

Baldwin	Northwestern Greening
Ben Davis	Opalescent
Cortland	Pumpkin Sweet
Canada Red	Rambo
Delicious	Red Astrachan
Duchess	R. I. Greening
Early Harvest	Rome Beauty
Fall Pippin	Roxbury Russet
Fameuse	Smokehouse
Gano	Stark
Gilliflower	Stayman's Winesap
Gravenstein	Sweet Bough
Grimes' Golden	Tolman Sweet
Hyslop	Transcendent
Hubbardston Nonesuch	Twenty Ounce
Jonathan	Wagener
King	Wealthy
McIntosh	Williams' Early Red
Maiden Blush	Winter Banana
Mammoth Black Twig	Wolf River
Newtown Pippin	Yellow Transparent
Northern Spy	York Imperial

Reference to page 5 will show two price lists on Apples—one of them covering all varieties of standard apples which come under the usual Maloney Guarantee, the other list embracing certified varieties at a price slightly higher to cover the cost of certification.

10% CASH DISCOUNT
AND FREE TRANSPORTATION OFFER
for FALL 1926

We allow 10% on cash orders mailed on or before October 15th.

We prepay Transportation Charges on cash orders of \$7.50 or more received during the entire Fall season of 1926 for shipment to all points in the following states:

Connecticut	Maryland	Ohio
Delaware	Massachusetts	Pennsylvania
Dist. of Columbia	Michigan	Rhode Island
Illinois	New Hampshire	Vermont
Indiana	New Jersey	Virginia
Maine	New York	West Virginia

To all other states we will reimburse you for one-half transportation charges.

All orders of \$7.50 and up to \$35.00 from the above States will be delivered by Express Prepaid.

Those of \$35.00 and up will be delivered by Freight Prepaid.

Our Shipping Season usually opens about the 15th of October and continues until cold weather.

Order Early for orders are shipped in the rotation they are received. We cannot delay orders received first for orders coming later on, therefore advise placing orders early.

Rates. 50 Trees at hundred rate provided there are not less than ten of any one variety.

Terms. 10% Discount on all cash orders mailed on or before October 15th. We will ship trees and plants C. O. D. pro-

vided 25 per cent of the total of your order is sent in cash with order. If the order goes by express you pay the balance to your express agent upon arrival. If the order goes by freight you pay the balance at your bank, where you will also find Bill of Lading which you present to your freight agent who will deliver shipment to you.

How to Remit. By Check, Bank Draft, Express Money Order, Post Office Money Order or Registered Letter.

Boxing and Packing Free. We box and pack all shipments without charge.

Maloney Trees are the Finest that Skill and Science can Produce.
Direct from our Upland Nurseries to You.

Fall Planting Is Advisable

Uniform moisture and temperature of the ground are more favorable to root formation. The root action of plants requiring Fall planting becomes well established long before the ground is fit for planting in the Spring. Adverse conditions commonly prevailing in the Spring, such as making gardens, usual and regular Spring farm work and heavy rains make it many times impossible to plant until very late, thus shortening the growing season. Fall is recognized as an ideal time to plant and is endorsed by Horticultural Experimental Stations. By setting now you will gain fully half a growing season over Spring planting.

It Pays to Plant Maloney Trees

For We Secure Our Scions for Budding from
Fruiting Trees of Known Merit

WE GUARANTEE OUR STOCK

To arrive at destination in a satisfactory condition. Should any arrive otherwise, we expect the consignee to notify us within five days after arrival and we will immediately duplicate the unsatisfactory items.

To be positively free from disease.

To be absolutely TRUE TO NAME.

This guarantee is backed by over 40 years' experience and a capital of \$150,000

CERTIFICATE

No. 2443

STATE OF NEW YORK

DEPARTMENT OF FARMS AND MARKETS

BERNE A. PYRKE, Commissioner

Certificate of Inspection of Nursery Stock

This is to certify that the nursery stock of MALONEY BROS. NURSERY CO., INC., of DANSVILLE, County of LIVINGSTON, State of NEW YORK, was duly examined in compliance with the provisions of Article 14 of the Farms and Markets Law and was found to be apparently free from any contagious or infectious disease or diseases, or the San Jose scale or other dangerously injurious insect pest or pests. This certificate expires September 1, 1927.

Dated, Albany, N. Y., Sept. 1, 1926.

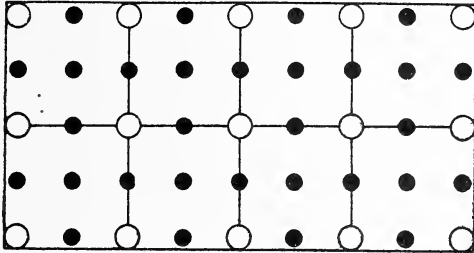
BERNE A. PYRKE, Commissioner.

By GEO. G. ATWOOD, Director Bureau of Plant Industry.

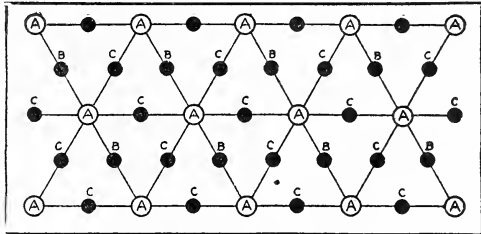
Our References

MERCHANTS & FARMERS BANK	DANSVILLE, N. Y.
LIVINGSTON COUNTY TRUST Co.	GENESEO, N. Y.
CITIZENS BANK OF DANSVILLE	DANSVILLE, N. Y.
R. G. DUN COMMERCIAL AGENCY	NEW YORK CITY
BRADSTREET'S COMMERCIAL AGENCY	CHICAGO, ILL.
ANY BUSINESS HOUSE IN DANSVILLE, N. Y.	

Suggestions on Orchard Planting



SQUARE PLAN for Setting an Orchard. Open circle represents permanents, 40 ft. apart; and dots fillers, 20 ft. apart. The latter to be removed in twenty years. These are distances adopted by most planters.



TRIANGULAR PLAN for Setting an Orchard. A permanent, set 40 ft. apart. C and B fillers, 20 feet apart. C fillers to be removed in fifteen years. B fillers to be removed in 25 years. These are the distances adopted by most planters.

Number of Trees or Plants to an Acre.
The following table will show how many trees or plants are required for an acre at any distance apart.

	Square Method	Triangular Method
40 feet apart	27 trees	31 trees
35 feet apart	35 trees	40 trees
30 feet apart	50 trees	55 trees
25 feet apart	70 trees	80 trees
20 feet apart	110 trees	125 trees
18 feet apart	135 trees	155 trees
15 feet apart	195 trees	225 trees
12 feet apart	305 trees	350 trees
10 feet apart	435 trees	505 trees
8 feet apart	680 trees	775 trees
6 feet apart	1,210 trees	1,600 trees
5 feet apart	1,745 trees	2,010 trees
4 feet apart	2,722 trees	3,145 trees
3 feet apart	4,840 trees	5,590 trees
2 feet apart	10,890 trees	12,575 trees
1 foot apart	43,560 trees	50,300 trees

Suitable Distances for Planting

Apples, Standard	30 to 40 feet
Apples, Dwarf	8 to 10 feet
Pears, Standard	18 to 20 feet
Pears, Dwarf	10 feet
Peaches and Apricots	16 to 18 feet
Cherries, Sweet	18 to 20 feet
Cherries, Sour	15 to 18 feet
Plums	16 to 20 feet
Quinces	10 to 12 feet
Grapes	8 to 10 feet
Currants	3 to 4 feet
Gooseberries	3 to 4 feet
Raspberries	3 to 4 feet
Blackberries	5 to 7 feet
Strawberries	1½ by 1½ feet
Asparagus, in beds	1 by 1½ feet
Asparagus, in fields	1 by 3 feet

Age That Our 2 Year Apple Trees Begin to Fruit

Three Years After Planting

Duchess	Wealthy
Grimes' Golden	Maiden Blush
	Yellow Transparent

Four Years After Planting

Ben Davis	Sweet Bough
Ea. Harvest	Stark
Gravenstein	York Imperial
	Jonathan

Five Years After Planting

Wagner	Red Astrachan
Fameuse	Rome Beauty
Hubbardston	Stayman's Winesap
McIntosh	Winter Banana
	Delicious

Seven Years After Planting

Baldwin	Spitzenburg
King	Tolman Sweet
Northern Spy	Wolf River
R. I. Greening	Newtown Pippin

Permanent Varieties

Amer. Blush	Northern Spy
Baldwin	R. I. Greening
Ben Davis	Smokehouse
Gano	Stark
Hubbardston	Tolman Sweet
King	Winter Banana
Newtown Pippin	York Imperial
	N. W. Greening

Filler Varieties

Duchess	McIntosh
Delicious	Red Astrachan
Ea. Harvest	Rome Beauty
Fameuse	Stayman's Winesap
Fall Pippin	Twenty Ounce
Gravenstein	Wagner
Grimes' Golden	Wealthy
Jonathan	Yellow Trans.

Our 42nd Year Selling Direct to the Planter

Planting and Care of Stock

This is important—Read it carefully.

Care of Stock on Arrival. All stock should be planted immediately on arrival; but if not convenient to do so, open bundle and heel roots in the ground, covering them thoroughly.

Plant When the Soil is Reasonably Dry. In such condition as you would when planting corn or potatoes.

Pruning. Roots are sometimes bruised in digging. For best results it is imperative that you trim about one-fifth of the root, making a nice smooth cut, thus removing all bruised ends. Cut back one-half of the limb growth.

Planting. Dig the holes deep enough so the trees will be set one inch deeper than they were in the nursery row, and wide enough to admit the roots of the trees to spread out in their natural position. Having dug the hole as directed, let one person hold the tree upright and the other shovel in the earth; fill the hole about one-fourth with the richest dirt, pack it solidly, then put in one pail of water, now fill the hole two-thirds with dirt, pack firmly, then fill up the balance of the hole and pack well.

Drainage. Your time and money are wasted if you plant on undrained soil. All hollows should be avoided when selecting positions for planting.

Watering Newly-Planted Nursery Stock. A good soaking once or twice a week if the ground is dry should be resorted to. A mulch of long manure, grass clippings or straw helps to retain this moisture and should be provided if possible.

Labels. Labels should be removed. The wires will cut and damage the limbs.

Cultivation. Ten days after the tree has been planted work around it to keep the soil loose; do this about every two weeks during May, June, July and August.

These planting directions apply to all kinds of nursery stock. When planting evergreens, however, prune the roots only.

Trimming Shrubbery. Newly planted shrubbery should be cut back severely; from one-third to one-half of the top should be removed. If the planting is done in the Fall this trimming should be deferred until early the following Spring.

Shrubs that bloom before the middle of June should be trimmed just after the blooming period to ensure a profusion of bloom the following year. Shrubs like Altheas and Hydrangeas which bloom later should be pruned in the Winter. Fading flowers and forming seed vessels should, where practicable, be removed, that the strength which otherwise would go into ripening seeds may be diverted to forming flower buds for the ensuing year. In trimming shrubs avoid stiff unnatural results and cut so the plant will bear long, graceful branches.

Winter Protection. Most of us have some varieties which are a little delicate or which have so recently been transplanted that some Winter protection is necessary. A mulch of manure about one inch deep, spread about such plants after the ground becomes frozen, prevents the alternate freezing and thawing which is disastrous. Leaves are valuable for mulching, especially for the perennial beds. They may be confined by branches or wire netting.

If you use barnyard fertilizer for mulching, allow it to remain until about the 10th of April, then work it into the ground.



Correct Way to Prune Trees for Planting



Correct Way to Prune Shrubs

Buying Direct You Save the Middleman's Profit.

APPLES



BLOCK OF 450,000 OF OUR 2 YEAR HARDY UPLAND GROWN APPLE TREES

Prices of All Varieties of Standard Apple Trees

Budded on Whole Branched Root Imported French Seedlings

		Height	Caliper		Each	Ten	Hundred
Largest Size	2 Year	5 to 7 Feet	3/4 and up	XXX.....	\$.95	\$8.50	\$60.00
Medium Size	2 Year	4 to 6 Feet	5/8 to 3/4	XX.....	.90	8.00	55.00
Smaller Size	2 Year	3 1/2 to 5 Feet	1/2 to 5/8	X.....	.85	7.50	50.00
Largest Size	1 Year	3 Feet and up	Sturdy Buds	XXX.....	.90	8.00	55.00

Fifty at hundred rate, providing not less than ten of any one variety.

Parcel Post. First class 3 foot trees sent by parcel post, postage prepaid, for 75 cents each, \$6.50 per 10.

10% Discount on all Cash Orders mailed on or before October 15th.

Prices of Certified Standard Apple Trees

(For Varieties See Opposite Page One)

Budded on Whole Branched Root Imported French Seedlings

		Height	Caliper		Each	Ten	Hundred
Largest Size	2 Year	5 to 7 Feet	3/4 and up	XXX.....	\$1.05	\$9.50	\$70.00
Medium Size	2 Year	4 to 6 Feet	5/8 to 3/4	XX.....	1.00	9.00	65.00
Largest Size	1 Year	3 Feet and up	Sturdy Buds	XXX.....	1.00	9.00	65.00

Fifty at hundred rate, providing not less than ten of any one variety.

Apple Trees should be planted on elevated ground rather than in a hollow or low ground, and they require fertile soil, such as is needed for corn and wheat.

An Apple Orchard with Maloney Upland Trees is a Good Investment

SUMMER VARIETIES

Early Harvest. Medium to large size; pale yellow; tender, with a mild, fine flavor. Early July to end of August.

Red Astrachan. Tree hardy and regular bearer, a very vigorous grower; fruit large, roundish, nearly covered with deep crimson overspread with a thick bloom; juicy, rich and beautiful. July and August.

Sweet Bough. Large, pale yellow; sweet, tender and juicy. Tree a compact grower and abundant bearer. August.

Williams Early Red. Medium sized; dark red, sometimes yellow splashed; flesh is crisp, tender, juicy and sub-acid. August.

Yellow Transparent. Medium size, roundish, oblate, slightly conical; skin pale yellow when fully matured; flesh tender, juicy, sprightly, sub-acid; good. August.

AUTUMN VARIETIES

Duchess of Oldenburg. Medium size; red striped; flesh white, juicy and excellent and make fine fillers; require small root and branch space. Crops nearly always large.

Fall Pippin. Large, yellow, tender, juicy and rich. Fine in all localities; tree vigorous September and October.

Gravenstein. An attractive and excellent quality apple. Fruit large and uniform in size, skin thin, tender, greenish yellow overlaid with dark red. September to November.

Maiden's Blush. Large, flat; pale yellow with a red cheek; tender and pleasant, but not high flavored. Tree an erect grower and a good bearer. A valuable market apple. September and October.

Pumpkin Sweet. Very large; yellowish russet; sweet and rich. Valuable. Oct. and Nov.

Rambo. Medium, red and yellow. Mild flavor. Excellent old variety. Oct. to Dec.

WINTER VARIETIES

Cortland. (New Variety Developed by New York State Experimental Station.) A fine apple resulting from the cross pollenization of McIntosh and Ben Davis. Inheriting only the good qualities of each, the new apple has found additional good qualities of its own

which are rapidly making it a strong competitor of the Baldwin in popularity. The Cortland is a beautiful red apple, larger than the McIntosh, of better quality and matures a month later. Keeps late in Winter and can be handled and shipped like the hardiest of other market varieties. Has the calibre of a real leader.

Baldwin. This is the leading commercial variety in the American markets. It is to apples what Elberta is to peaches and Montmorency is to cherries. One of the best storage apples for export trade. Baldwin is planted extensively and succeeds wonderfully well in all states east of the Mississippi. No variety yields larger crops, bears shipment better or is more attractive in color, size and shape. It is highly esteemed for an eating and cooking apple. Fruit large, bright red, crisp, juicy and rich. Trees vigorous, upright and productive. For a commercial orchard, it can be relied upon. December to March.

Ben Davis. Fruit is medium to large. Bright red or red striped with clear yellow. Season —January to June. It succeeds wherever apples are grown.

Canada Red. Tree medium to large. Fruit medium to large, uniform in size and shape. Skin rather clear light yellow overspread in well colored specimens with a fine deep red blush, indistinctly striped with deeper red.

Delicious. No variety has ever so quickly gained popularity in so many different apple sections of our country. Fruit large, nearly covered with brilliant dark red, flesh fine grained, crisp and melting, juicy with a delightful aroma of very highest quality. A splendid keeper and shipper. Tree one of the hardiest. November to April.

Fameuse. (Snow Apple.) Medium size; deep crimson; flesh snowy white, melting and delicious, one of the finest dessert fruits and valuable for market; a good baking apple. October to December.

Gano. An improved Ben Davis, adding to the good qualities of that variety a much handsomer fruit of deep, dark red, that brings a ready sale in market. Dec. to March.

Gilliflower. (Black.) An old dessert apple; tree a good vigorous grower and a reliable cropper. October to February.

Grimes' Golden. Medium to large size; skin golden yellow, sprinkled with gray dots; flesh crisp, tender, juicy, sprightly, very good to best. December to April.

Hubbardston Nonesuch. Large, striped yellow and red; flesh yellow, juicy and tender. November to March.

Jonathan. A beautiful red apple, highly flavored and of excellent quality, being tender, juicy, spicy, and rich. Tree long-lived, productive, and an early bearer. November to January.

King. Flesh yellow, crisp, tender, juicy and sub-acid in flavor. Skin fine yellow, mottled with orange red, splashed with carmine. October to January.

Mammoth Black Twig. Resembles a large Winesap. Dark red. If a late winter apple is desired you will make no mistake in adding it to your list. December to April.

McIntosh Red. An exceedingly valuable, hardy, attractive apple; good size; nearly covered with red. Flesh white, fine, very tender, juicy and refreshing. Tree hardy, vigorous, a good annual bearer—comes into fruiting early, yielding large crops. Do not overlook McIntosh when selecting varieties for commercial and orchard planting. It has no superior as an early winter apple. October to January.

Newtown Pippin. Medium to large; yellow, delicious flavor; a long keeper. Known throughout Virginia as Albemarle Pippin. November to May.

Northwestern Greening. A round, large, attractive, greenish yellow apple; flesh fine grained, juicy, firm, good quality. Oct. to April.

Northern Spy. A hardy, large, red, winter apple. Flesh juicy, rich, crisp, tender, aromatic, of good flavor. Tree very healthy, strong grower, rugged. Blossoms very late, escaping frosts. December to March.

Opalescent. Tree vigorous. Fruit large to very large. Color bright pale yellow nearly or quite overspread with dark deep red with streaks of purplish-carmine. Nov. to March.

Rhode Island Greening. Large. Flesh yellowish, firm, fine grained, crisp, tender, juicy, slightly sub-acid, very good. Skin grass-green to yellow, sometimes with brownish-red blush. Tree large, strong, vigorous, wide spreading. Ripens in December, keeps until April.

Rome Beauty. Large, round; mottled and striped in different shades of red; flavor and quality way above the average; appearance and size are its valuable points. December to March.

Roxbury Russet. Medium to large. Surface rough, greenish covered with russet. December to May.

Stark. Large, striped, mild, sub-acid, good. Valuable as a keeper. January to May.

Smokehouse. Fruit medium to large, uniform size and shape. Color yellow or greenish mottled with rather dark red, sometimes deepening to a solid bright red. Oct. to March.

Stayman's Winesap. Medium to large, attractive; green and yellow, almost hidden by dark red stripes; flesh yellow; plenty of juice; quality the finest. Tree a quick and a large grower, bears young, often producing a barrel to a tree when five years old. Bears every year, crops uniformly heavy. Dec. to April.

Tolman Sweet. Medium size; color, light yellow; flesh white, firm, rich, and very sweet. November to April.

Twenty Ounce. Very large, yellow, striped red, fine quality apple; good keeper. Tree vigorous grower, productive. October to January.

Wagener. Fruit large, tender, firm and very juicy. Bright pinkish red striped with carmine. Tree vigorous and hardy. No orchard is complete without this superior flavored apple. December to May.

Wealthy. Fruit large, roundish; skin smooth, oily, covered with a dark red. Flesh white, tender, juicy, vinous, sub-acid; quality very good. This variety is particularly valuable for cold climates because the tree is very hardy. Wealthy is being planted largely for commercial purposes as a filler in many sections. October to January.

Winter Banana. Fruit large size, perfect in form, golden yellow, and beautifully shaded and marbled with bright crimson red; flesh lemon-yellow, fine grained, sub-acid; rich, aromatic flavor, and of the highest quality. A good keeper. November to January.

Wolf River. Fruit is very large, some specimens weighing 27 ounces; flattened, conical, highly colored. An excellent cooking apple. September to December.

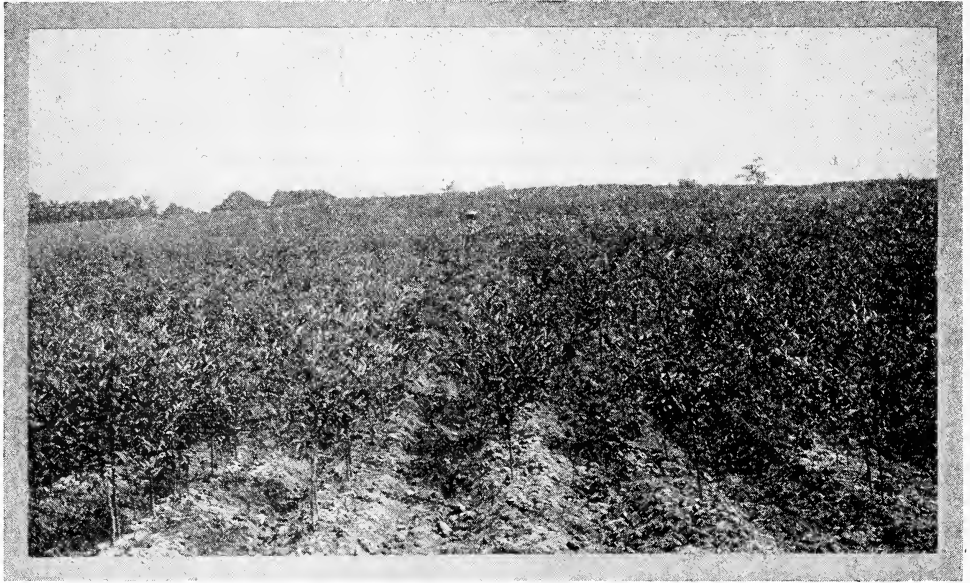
York Imperial. The fruit is of medium size, skin yellow and almost wholly covered with two shades of red, the darker one disposed in distinct stripes. November to February.

Best Hardy Crab Apples

Hyslop. Fruit large, deep crimson; produced in clusters; flesh yellow, sub-acid; and popular on account of its large size, beauty and hardness. October.

Transcendent. This is one of the best of all crab apples, is popular over the entire country; fruit bright yellow, striped with red. Excellent for jelly. September to October.

CHERRIES



BLOCK OF 250,000 OF OUR 2 YR. MONTMORENCY, HARDY UPLAND GROWN

Prices of all Varieties of Hardy Upland Grown Cherry Trees

Budded on the Best French Imported Cherry Stock

Sweet and Sour Cherry Trees

		Height	Caliper		Each	Ten	Hundred
Largest Size	2 Year	5 to 7 Feet	¾ and up	XXX.....	\$1.10	\$10.50	\$80.00
Medium Size	2 Year	4 to 6 Feet	⅝ to ¾	XX.....	1.05	10.00	75.00
Smaller Size	2 Year	3½ to 5 Feet	½ to ⅝	X.....	1.00	9.50	70.00
Largest Size	1 Year	3 Feet and up	Sturdy Buds	XXX.....	1.05	10.00	75.00

Fifty at hundred rate, providing not less than ten of any one variety.

PARCEL POST. First class 3 to 4 ft. trees sent by parcel post, postage prepaid, for 90 cents each, \$8.00 per 10.

10% Discount on all Cash Orders mailed on or before October 15th.

How to Plant. For your information cherry roots must not be given much sun or wind exposure—either is just as harmful as a heavy frost. You would not think of leaving them out over night uncovered. It is just exactly as necessary to protect them from sun and wind.

Requires Least Attention of all Fruits, because it has been demonstrated beyond question of doubt that scale cannot live on cherry.

Where to Plant. On any kind of land, other than wet. They will thrive beautifully on a sandy or gravelly soil.

**We Cut Our Scions for Budding from Bearing Trees of Known Merit.
All are Guaranteed Positively True to Name.**

SOUR CHERRIES

Dyehouse. A hardy and valuable cherry. The earliest cherry of fine quality. Often bears at two years old, and has the appearance of being covered with a purple cloth, such is the abundance of the fruit. Has the smallest pit of any cherry known. For tarts, pies and especially for canning it has no superiors among cherries. Early June.

Early Richmond. This is one of the most valuable and popular cherries and is unsurpassed for cooking purposes. This hardy cherry fruits on young trees soon after planting. It is a good old variety that yields such marvelous crops in the gardens. The most hardy of all varieties, uninjured by the coldest winters. Tree slender in growth, with a roundish spreading head, exceedingly productive. Fruit is medium size, round and dark red. The flesh tender, juicy, and sub-acid. Ripens in June.

English Morello. Without doubt one of the most valuable of this class. Easily grown, generally producing a heavy crop. Fruit dark red, quality good, with a rich, acid flavor; late. Tree very hardy, for extremely cold latitudes. August.

May Duke. Large, red; juicy and rich; an old, excellent variety; vigorous, productive. June.

Montmorency. This is the most popular sour cherry grown in America. No one questions its supremacy. It leads in the demand for this fruit, in the markets, in the canning factories and for home use. It is a large red cherry of the fine flavor. The flesh is of good quality and sub-acid. The trees are the cleanest and best growers and are less subject to disease, less affected by wet weather, and are the best bearers of all our sour varieties. The Montmorency is a good shipper, very attractive looking and always brings good prices. Ripens the last of June.

Ostheime. A hardy cherry from Russia. It has been tested in the severest winters of Minnesota, and has been found perfectly hardy. Fruit large. July.

Wragg. Much like the English Morello. More productive and excels in size, yield and quality. One of the hardiest cherries and has produced annual crops at the northernmost limit of cherry culture. August.

SWEET CHERRIES

Black Tartarian. This fine old variety produces immense crops of very large, purplish black fruits of mild, sweet, jelly-like consistency. The tree makes a beautiful, erect growth. Late June and early July.

Bing. This valuable new black cherry succeeds everywhere. Tree very thrifty and upright grower, very hardy, and productive, flesh very solid, flavor of the highest quality, a fine shipping and market variety. It is one of the most delicious sweet cherries. This valuable cherry should be followed by Lambert, which is later in ripening. Both are excellent. July.

Governor Wood. One of the best cherries; very large, light yellow, marbled with red; juicy, rich, and delicious; tree healthy and a great bearer; hangs well on the trees; vigorous. Last of June.

Lambert. A fine sweet variety originating in Oregon, and one of the largest of all cherries, dark purple red, turning almost a jet black when ripe. Flesh firm, rich, juicy. Tree rugged, strong grower and an enormous bearer. The growing of the sweet cherry is a great industry only fairly well begun. There

is an enormous market for the fresh fruit and when canned or preserved the markets of the world are open to the producer. Late July.

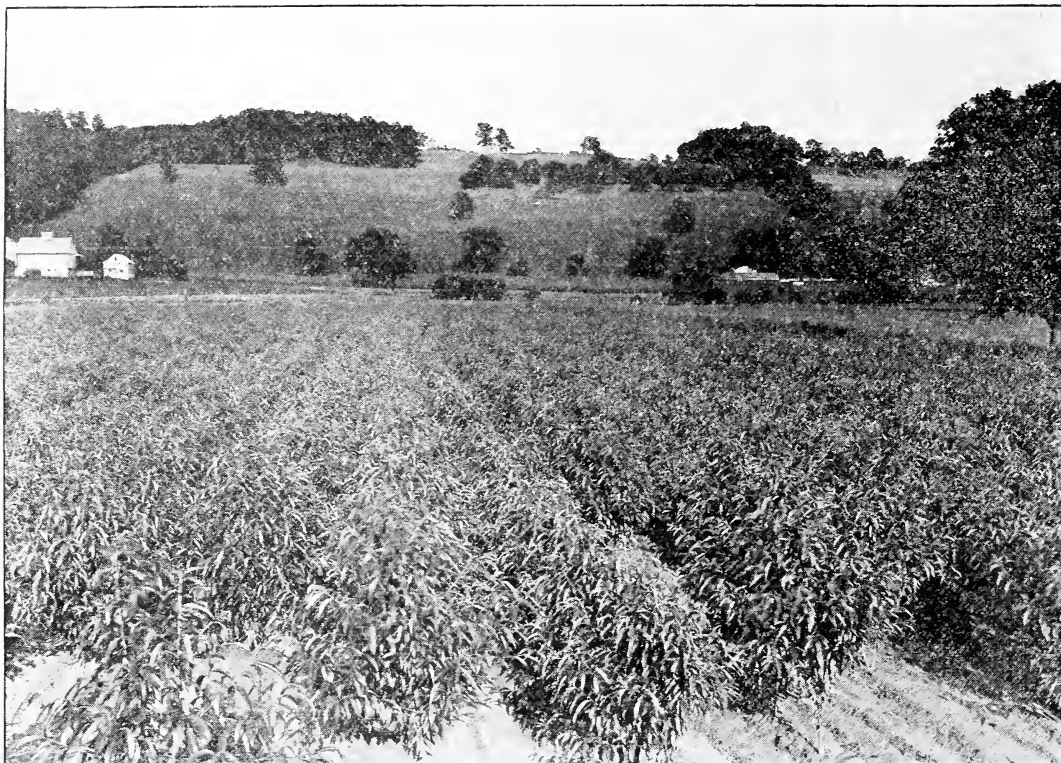
Napoleon. Tree medium size, erect with roundish head, fruit borne generally in twos, very large, oblong cordate, light lemon-yellow with red cheeks in the sun. Flesh very hard, brittle, colorless, reddish at the stone. Good, excellent bearer. June.

Schmidt's Bigarreau. The fruit is of very large size, of a deep mahogany color. The flesh is dark, tender, very juicy with a fine, rich flavor. Fruit grows in clusters. It is an excellent shipper and brings good money on the market. July.

Windsor. A splendid, large, liver-colored cherry that hangs a long time and rots but little. The flesh is remarkably firm and good, the tree very hardy and fruitful. Exceedingly valuable for late market and home use. July.

Yellow Spanish. Large, pale yellow with red cheeks; firm, juicy and excellent, one of the best light-colored cherries; vigorous and productive. Last of June.

PEACHES



200,000 ELBERTA PEACH TREES—BUDS CUT FROM BEARING TREES

Prices of all Varieties of Peach Trees

		Height		Caliper		Each	Ten	Hundred
Largest Size	1 Year	4½ to 6	Feet	9/16 and up	XXX.....	\$.75	\$7.00	\$40.00
Medium Size	1 Year	3½ to 4½	Feet	7/16 to 9/16	XX.....	.70	6.50	35.00
Smaller Size	1 Year	2½ to 3½	Feet	5/16 to 7/16	X.....	.65	6.00	30.00

Fifty at hundred rate, providing not less than ten of any one variety.

Parcel Post. First class 2-3 ft. small size trees sent by parcel post, postage prepaid for 45 cents each, \$3.50 per 10.

10% Discount on all Cash Orders mailed on or before October 15th.

Peach Growing is Today a Great Industry. In all probability more peaches are being planted annually than any other fruit. The comparative ease with which peach trees may be cultivated, the short period before they come into bearing, together with the wonderful demand for the fruit, make peach growing extremely profitable.

Soil. Peach trees will succeed on any kind of rich soil, but will not thrive on clay, nor damp, low land.

Every indication points to ideal weather and soil conditions for the planting of shrubs, vines and fruit trees this Fall, and from our personal experience we can heartily recommend this practice.

Stock planted this Fall will have time to get established and will start growing long before you can possibly expect to even plant in the Spring. That means that you will gain at least an entire month's growth.

We will take great pains to ship you the best stock money can buy.

Alexander. Medium, greenish white, nearly covered with rich red, melting, juicy, sweet. July. Free.

Belle of Georgia. Very large, white peach with red cheek. The flesh is white, firm and of fine flavor. Tree rapid grower and very productive. July. Free.

Carman. Fruit large, color creamy white or pale yellow with deep blush; flesh tender fine flavor and quite juicy; very hardy and productive every year. August. Free.

Crawford's Late. Fruit of large size; skin yellow, or greenish yellow, with a dull red cheek; flesh yellow; tree vigorous, moderately productive. Last of September. Free.

Crawford's Early. A magnificent large yellow peach of good quality. Tree vigorous and very productive. Its fine size, beauty and productiveness make it one of the most popular sorts; no other variety has been so extensively planted. First of September. Free.

Champion. Fruit large, beautiful in appearance; flavor delicious, skin creamy white, with red cheek; valuable for commercial orchards, extreme hardiness and splendid quality make it a favorite. Late August. Free.

Chair's Choice. Has no superior in quality and flavor, and for profit is without a rival; large, yellow, rich in color, flesh very firm, ripens after Smock; great bearer. October. Free.

Elberta. The leader of all peaches and the greatest commercial variety on the market; 50 per cent of the peaches planted are Elberta. In all probability no peach will succeed over so wide a range of territory as this kind. It will thrive where any peach can be grown. A beautiful peach of good quality, not only the best orchard variety, but also valuable for planting in the garden. Elberta is hardier in bud than many varieties, therefore a more uniform cropper. It is large, yellow, with red cheek, juicy and high flavor; flesh yellow. Season medium early, following quick upon Early Crawford. Early September. Free.

Fitzgerald. It is one of the hardiest peaches, both in bloom and tree; very prolific, large size. First of September. Free.

Greensboro. A valuable variety; color greenish-white, shaded and splashed with dark red, very hardy and not so subject to rot as are most early varieties. Owing to extreme hardness of both tree and bud we recommend it for sections where other varieties do not succeed. Late July. Free.

Heath Cling. The fruit is large and round. White, juicy and fine quality. Oct. Clingstone.

J. H. Hale. This notable new variety of peach is very large in size. In color it is deep golden yellow overlaid with bright carmine. The flesh is deep yellow, fine grained with a very delicious flavor. Late August. Free.

Kalamazoo. Large, golden yellow, with crimson cheek; flesh thick, yellow, superb quality, small pit. Strong grower, early bearer, hardy and productive. First of September. Free.

Mountain Rose. Large, red, white flesh, juicy and excellent. Early August. Free.

Niagara. Tree hardy, healthy in leaf and bud and bears abundantly. Fruit large, oval, yellow with brilliant red cheek. Last of August. Free.

Rochester. Is in a class by itself because it is the only good sized yellow freestone, excellent shipper. Mid-August. Free.

Salway. Large, roundish ovate, yellow, with a crimson cheek; flesh deep yellow, red at the pit; sweet, juicy, good. Valued as one of the best late peaches for market. October. Free.

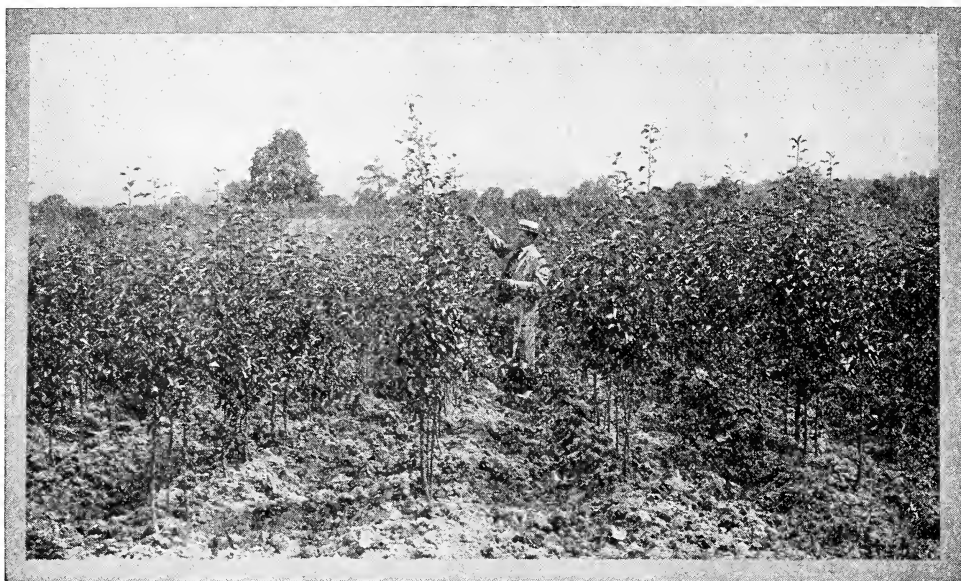
Smock Free. (Beers' Smock. Fruit large; oval; skin orange yellow, mottled with red; a good market sort. Last of September. Free.

Yellow St. John. Of medium size, orange yellow with a red blush on sunny side; flesh tender, juicy and quality very good. Tree is a strong grower and bears heavy crops every season. Mid-August.

10% Discount and Free Transportation Offer for FALL 1926

When buying from us you know precisely what your stock costs delivered to your station. We prepay freight and express charges and make no charge for packing nor boxes. We have carefully figured our costs and the prices quoted in this catalog are for the best quality stock sold direct from our nursery to you at a small margin of profit. Furthermore we assume responsibility for your stock enroute as we guarantee arrival of stock in good condition and allow five days after arrival to examine same. If all or any part is unsatisfactory we will duplicate the unsatisfactory stock or refund your money.

PEARS



BLOCK OF 100,000 OF OUR 2 YR. STANDARD PEAR TREES UPLAND GROWN

Prices of All Varieties of Hardy Upland Grown Standard Pear Trees

Budded on Best Imported French Stock

		Height	Caliper		Each	Ten	Hundred
Largest Size	2 Year	5 to 7 Feet	$\frac{3}{4}$ and up	XXX.....	\$1.10	\$10.50	\$80.00
Medium Size	2 Year	4 to 6 Feet	$\frac{5}{8}$ to $\frac{3}{4}$	XX.....	1.05	10.00	75.00
Smaller Size	2 Year	$3\frac{1}{2}$ to 5 Feet	$\frac{1}{2}$ to $\frac{5}{8}$	X.....	1.00	9.50	70.00
Largest Size	1 Year	3 Feet and up	Sturdy Buds	XXX.....	1.05	10.00	75.00

Fifty at hundred rate, providing not less than ten of any one variety.

PARCEL POST. First Class 3-4 ft. Pear trees sent by parcel post, postage prepaid, for 90 cents each, \$8.00 per 10.

10% Discount on all Cash Orders mailed on or before October 15th.

The Planting of Pears is on the increase, so much so that it has been difficult for us to supply the demand. This is especially true of Bartlett, Clapp's, Kieffer and Seckel which are the leaders and in the order as named.

Soil. Pears will succeed in a clay soil, although any good heavy soil will do, but avoid planting on sandy loam.

TERMS

We allow a 10 per cent discount on all cash orders mailed on or before Oct. 15th. If it is not convenient to send cash for the full amount, we will ship stock C. O. D., provided one-fourth of the total amount of the order is sent in cash with the order. If the shipment goes by Express, you pay the balance to your Express Agent upon arrival. If the order goes by Freight, you pay the balance at your bank where you will find Bill of Lading which you present to your Freight Agent who will deliver shipment to you.

Bartlett. Large, coloring when fully ripe to waxy yellow with red blush; juicy, melting highly flavored, a most delicious fruit; tree bears early and abundantly. We have sold many large orchards of this variety. The fruit ripens just at a time when there is but little competition; in fact there is no pear ripening at the same time that is in the Bartlett class. It might surprise you to know—nevertheless it is a fact—that there are more of this variety planted than all other kinds of pears combined. September.

Beurre D'Anjou. This is one of the best known, most popular and profitable late pears. The tree is a vigorous grower, hardy and prolific. The pears are of large size, green in color, but often yellowing when thoroughly ripe. They are very juicy and luscious and of the best quality. For late fall and early winter, we have no better variety. October to Jan.

Beurre Clairgeau. Large; light yellow, shaded with crimson and russet. Flesh yellowish melting. Early, abundant bearer. Nov. to Jan.

Beurre Bosc. A large and beautiful russet pear, very distinct with a long neck; melting or nearly so, high flavored and delicious; bears well. This pear is generally conceded to be a high quality pear. Early October.

Clapp's Favorite. This is without doubt the most productive pear on the market. It is a large, long, yellow pear, richly flushed with russet red next the sun. The flesh is fine grained, juicy, melting and buttery. A cross between the Bartlett and Flemish Beauty—earlier than Bartlett and resembling Flemish Beauty in growth. It is a hardy variety, fine grower and very productive. It is classed with the commercial varieties and should be planted extensively. It is very pleasant to eat out of hand and is therefore a favorite for garden planting. This variety should be included in all large plantings of pear trees. Early August.

Duchess D'Angouleme. A most dependable cropper, often fruiting the first season after planting. Fruit large, frequently weighing a pound. A dull greenish yellow, spotted russet, flesh white, rich and good quality. An all-round profitable market pear. October and November.

Flemish Beauty. Pale yellow, covered with russet. Large, sweet and melting. This fine old pear is still one of the hardiest and most generally successful over a wide range of country, producing good crops annually of handsome fruit that is exceptionally good in quality. September and October.

Howell. Large, yellow, with red cheek; early bearer and productive. September and Oct.

Kieffer. Large, rich golden yellow, sometimes tinted red on the sun-exposed side; fair quality, excellent for canning. It has become a profitable market variety on account of its good shipping and keeping qualities. To properly ripen should remain on the trees

until leaves begin to fall, then gather carefully and allow to ripen in a cool dark cellar, or other place of even temperature. October to November.

Koonce. A very popular early variety. Fruit large, yellow, one-half nearly covered with red. Does not rot at the core. Tree vigorous, hardy and upright grower. Very productive and a good shipper. July.

Lawrence. Medium to large, golden yellow, with melting, aromatic flesh. Unsurpassed as an early winter pear. The tree is hardy, healthy and productive, bearing large crops annually. November and December.

Sheldon. A large, round, russet and red pear of very fine quality, melting, rich and delicious. Tree vigorous, erect and handsome, bears well and should be more largely planted. October.

Seckel. A beautiful and delicious little pear that is the standard of excellence in its class. One of the richest and highest flavored pears known, always in demand. The tree makes a somewhat slow but stout growth. September to October.

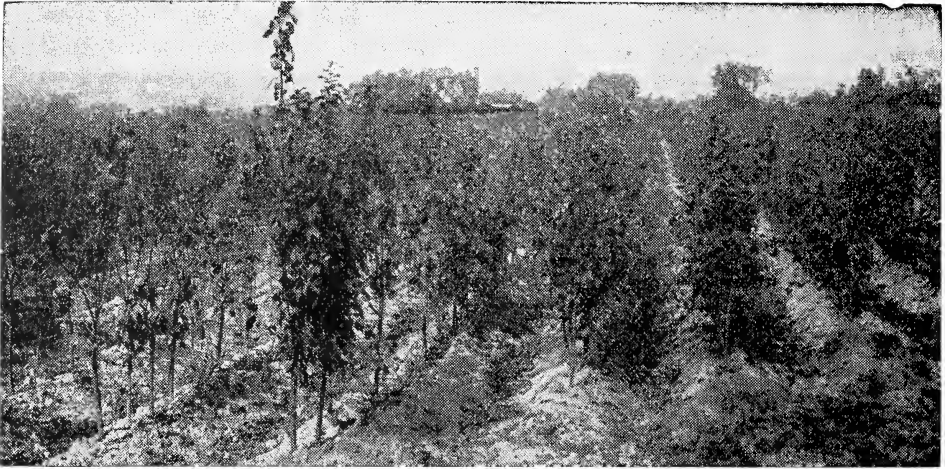
Vermont Beauty. This is one of the newer varieties, but one which should not be overlooked when picking out the different kinds you want to set. The tree originated in Northern Vermont and is very hardy and thrifty. October and November.

Wilder. One of the very earliest pears, of excellent quality. Of medium to large size, irregular, bellshaped; pale yellow with shadings of russet-red. Early August.



CLAPP'S FAVORITE

PLUMS



BLOCK OF 110,000 OF OUR 2 YR. OLD PLUM TREES, HARDY UPLAND GROWN

Prices of all Varieties of Upland Grown Plum Trees

		Height	Caliper		Each	Ten	Hundred
Largest Size	2 Year	5 to 7 Feet	$\frac{3}{4}$ and up	XXX.....	\$1.10	\$10.50	\$80.00
Medium Size	2 Year	4 to 6 Feet	$\frac{5}{8}$ to $\frac{3}{4}$	XX.....	1.05	10.00	75.00
Smaller Size	2 Year	$3\frac{1}{2}$ to 5 Feet	$\frac{1}{2}$ to $\frac{5}{8}$	X.....	1.00	9.50	70.00
Largest Size	1 Year	3 Feet and up	Sturdy Buds	XXX.....	1.05	10.00	75.00

Fifty at hundred rate, providing not less than ten of any one variety.

PARCEL POST. First Class small size 3-4 ft. trees sent by parcel post, postage prepaid, for 90 cents each, \$8.00 per 10.

10% Discount on all Cash Orders mailed on or before October 15th.

Plums are hardy and grow vigorously in nearly all sections, succeeding on any soil that grows good corn or potatoes.

Bradshaw. A very large and fine early plum, dark violet red, juicy and good. Very productive; valuable for market. Middle of Aug.

Felleberg Prune. A fine prune, oval; purple; flesh juicy and delicious; parts from the stone; fine for drying; tree very productive. Early September.

German Prune. Medium; oval; purple or blue; juicy, rich, fine. Tree vigorous and very productive. One of the best. There is no easier grown fruit that gives greater or more certain profit than the German Prune. Owing to its keeping qualities it is highly prized for shipping. September.

Grand Duke. One of the best late plums for market, as large as Bradshaw, of same color, entirely free from rot. Last of September.

Imperial Gage. Rather large, oval, greenish. Flesh juicy, rich and delicious. Parts from the stone. Tree a vigorous grower, very productive and one of the best of the plums. Middle of August.

Lombard. It is a handsome reddish plum, the flesh yellow, juicy and pleasant. It is an excellent variety and can be relied on for a crop when other varieties fail. August.

Moore's Arctic. Fruit grown in clusters. Color dark blue or nearly black when fully ripe. September.

Maloney Prune. Color dark blue. Flesh yellow and delicious. Tree is a splendid grower, extremely hardy. It comes into bearing at an early age. Season extending from September until freezing weather.

Niagara. Red, large size, makes an attractive appearance in market, and possesses good shipping qualities. It bears enormous crops of fruit. Middle of August.

Reine Claude. (Bavay's Green Gage.) Round, oval, greenish, marked with red in the sun; a great favorite. September.

PLUMS—Continued

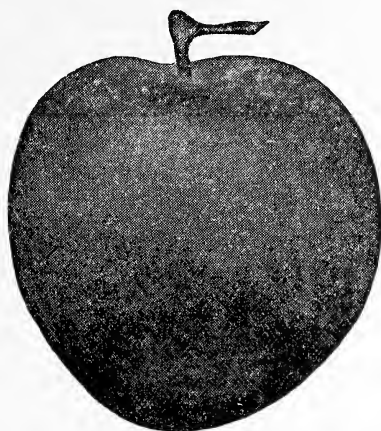
Shipper's Pride. Large, nearly round; dark purple; quite juicy, sweet; splendid shipper; moderate grower; productive. Originated in northwestern New York. September.

Shropshire Damson. One of the favorite Damsons. Fruit oval; tree a good grower and enormously productive; fruit of medium size produced in thick clusters of groups, dark purple color, esteemed for preserving. Oct.

Thanksgiving Prune. Very productive, good quality and long keeper. It will keep for weeks and months after picking. Tree is extremely hardy, as a matter of fact will succeed in any state east of the Rockies; absolutely proof against severe winters. Oct.



SHROPSHIRE DAMSON



ABUNDANCE

JAPAN PLUMS

Abundance. One of the best Japan plums. The tree a rapid grower, healthy, comes into bearing remarkably young and yields abundantly. Fruit of medium size, large when thinned; amber, with markings of red; juicy, sweet, of good quality when well ripened. May be picked when it begins to color; will keep a long time. August.

Burbank. Is decidedly the best of Japan varieties, unsurpassed for beauty and productivity, as well as a very hardy tree. One of the grand points about the Burbank is that it succeeds over a wide range of our country, and will stand the most severe winters. Fruit large, oval, with reddish purple skin; flesh yellow, juicy and good. August.

Red June. The great early market plum. Medium to large; deep vermilion red, with beautiful bloom; very showy; flesh light lemon-yellow, firm, slightly sub-acid, delightful. It is the best in quality of any of the early Japanese plums, free from rot. Ripens in early August.

Wickson. This, largest of the Japan plums, is superb in every way. The color is bright cherry-red, covered with a light bloom; the pit is small for so large a fruit, the flesh is thick, sweet, tender and rather dry, indicating good keeping and shipping qualities. September.

Yellow Egg. Golden yellow covered with thick bloom. Flesh golden yellow. Rather juicy. Tree large, very productive. September.

York State Prune. Large size, color dark blue, covered with purple. Delicious. One of the largest, best in quality and most productive of all prunes. Tree is a vigorous grower and hardy. This variety is being planted extensively and is considered the best for commercial purposes. Last of August.

WE GUARANTEE OUR STOCK

To arrive at destination in a satisfactory condition. Should any arrive otherwise, we expect the consignee to notify us within five days after arrival and we will immediately duplicate the unsatisfactory items.

To be positively free from disease.

To be absolutely TRUE TO NAME.

This guarantee is backed by over 40 years' experience and a capital of \$150,000

Practical Collections Compiled for Garden Planting, \$5.00 Each

10% Discount on all Cash Orders mailed on or before October 15th.

Maloney Garden Collection No. 1

- 1 Rome Beauty Apple
- 1 Montmorency Sour Cherry
- 1 York State Prune
- 1 Clapp's Favorite Pear
- 1 Rochester Peach
- 1 Windsor Sweet Cherry

All strictly first class 2 year 5-7 feet high.

Maloney Special Price, \$5.00

Quince Tree Collection No. 2

- 2 Orange
- 1 Meech's Prolific
- 2 Champion

All strictly first class, 2 year 4-5 feet high.

Maloney Special Price, \$5.00

Peach Tree Collection No. 3

- 2 Hale
- 2 Elberta
- 2 Rochester
- 2 Early Crawford

All strictly first class, 1 year 4½-6 feet high.

Maloney Special Price, \$5.00

Sweet Cherry Tree Collection No. 4

- 1 Gov. Wood
- 2 Napoleon
- 1 Lambert
- 1 Windsor

All strictly first class, 2 year 5-7 feet high.

Maloney Special Price, \$5.00

Plum Tree Collection No. 5

- 1 Bradshaw
- 1 Abundance
- 1 Grand Duke
- 1 Reine Claude
- 1 York State Prune

All strictly first class 2 year 5-7 feet high.

Maloney Special Price, \$5.00

Everybody's Favorite Collection No. 6

- 1 Bartlett Pear
- 1 Montmorency Sour Cherry
- 1 Wealthy Apple
- 1 Lambert Sweet Cherry

All strictly first class 5-7 feet high.

- 1 Concord Grape
- 1 Catawba Grape
- 1 Niagara Grape
- 2 Wilder Currant

25 Cuthbert Red Raspberries

Maloney Special Price, \$5.00

Standard Apple Tree Collection No. 7

Summer Variety

- 1 Yellow Transparent

Fall Varieties

- 1 Gravenstein
- 1 Maiden's Blush

Winter Varieties

- 2 Wealthy
- 2 Winter Banana

All strictly first class, 2 year 5-7 feet high.

Maloney Special Price, \$5.00

Dwarf Apple Tree Collection No. 8

- 2 Yellow Trans. (ea. summer)
- 2 Alexander (streaked—ea. fall)
- 2 McIntosh (red—winter)

All strictly first class 3-4 feet high.

Maloney Special Price, \$5.00

Sour Cherry Tree Collection No. 9

- 2 Early Richmond
- 1 Eng. Morello
- 2 Montmorency

All strictly first class, 2 year, 5-7 feet high.

Maloney Special Price, \$5.00

Standard Pear Tree Collection No. 10

- 1 Lawrence
- 2 Seckel
- 2 Bartlett

All strictly first class, 2 year, 5-7 feet high.

Maloney Special Price, \$5.00

Rose Collection No. 11

- 1 LaFrance—Pink
- 1 Maman Cochet—Pink
- 1 Blanche Roberts—White
- 1 Gruss an Teplitz—Red
- 1 Gen. Jacqueminot—Red
- 1 Frau Karl Druschki—White
- 1 Baron de Bonstetten—Red

All First Class, 2 Year Plants

Maloney Special Price, \$5.00

Shrub Collection No. 12

- 2 Hydrangea Arbor.
- 2 Spiraea Van Houttei
- 2 Lilac Purple
- 2 Common Snowball
- 2 Deutzia Crenata

All First Class, 2 Year Plants

Maloney Special Price, \$5.00

Maloney's Extra Large Garden Trees

Planting Instructions

Cut off about six inches of the limb growth, prune off bruised ends of roots, if any, make a smooth cut, dig hole deep enough so that the tree will be buried to the same depth as when standing in the nursery row, or up to the collar—soak roots in water one-half hour, place trees in hole, fill in one-fourth, tread well; another one-fourth, tread well, the third one-fourth, tread well; then finish filling and tread firmly so that when the tree is set it would require a strong man to pull it out.

For Your Back Yard

By this we mean trees which have been especially selected, once transplanted and scientifically treated. They will come into fruiting early. Your success is assured provided you follow the simple directions for planting on this page.

The value of these trees lies in the fact that they are what you might term "the cream of our nursery." We have cared for them until they have developed into just the kind of trees for your back-yard or small home orchard.

A great many people make the very serious mistake of selecting small trees for their garden planting, when a few extra cents invested now will purchase trees which will fruit much earlier.

From the fact these trees have once been transplanted, they are equipped with a beautiful root system which enables them to establish themselves quickly. Before planting be careful to have your soil loose and mellow.

Just read the planting directions on this page and see how easy it will be for you to set your EXTRA LARGE GARDEN TREES.

MALONEY EXTRA LARGE

XXXX 6-7 Feet

COLLECTION No. 100—\$5.00

- 1 Yellow Transparent Apple
- 1 Clapp's Favorite Pear
- 1 Windsor Sweet Cherry
- 1 Montmorency Sour Cherry

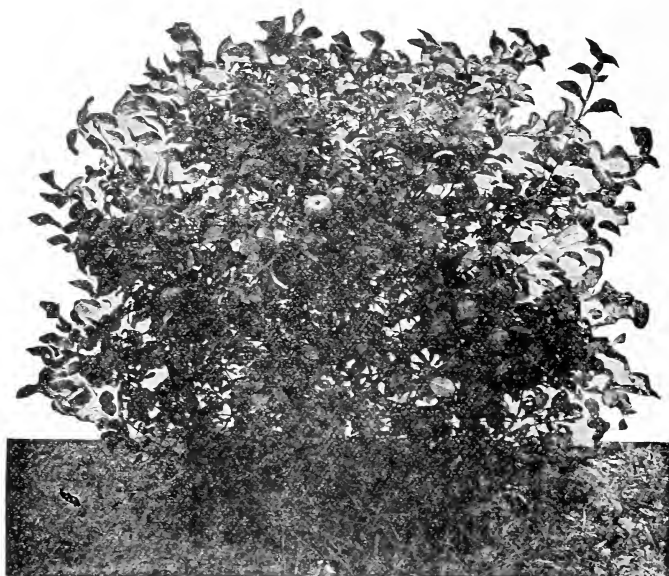
10% Discount on all Cash Orders mailed on or before October 15th.

Prices of All Extra Large Garden Trees

SPECIALLY SELECTED

	Height	Grade	Each	Ten
STANDARD APPLE	6 to 7 Feet	XXXX	\$1.50	\$12.50
VARIETIES: Baldwin, Ben Davis, Delicious, Duchess, Early Harvest, Fall Pippin, Grimes' Golden, Hyslop Crab, King, McIntosh, Northern Spy, N. W. Greening, Pound Sweet, Pumpkin Sweet, Red Astrachan, R. I. Greening, Rome Beauty, Stayman's Winesap, Stark, Sweet Bough, Tolman Sweet, Wagener, Wealthy, Yellow Transparent, York Imperial, Winter Banana.				
STANDARD PEAR	6 to 7 Feet	XXXX	\$1.50	\$12.50
VARIETIES: Bartlett, Beurre Bosc, Beurre Clairgeau, Beurre D'Anjou, Clapp's Favorite, Duchess, Flemish Beauty, Kieffer, Lawrence, Seckel, Sheldon, Wilder, Winter Nelis.				
SWEET CHERRY	6 to 7 Feet	XXXX	\$1.50	\$12.50
VARIETIES: Bing, Black Tartarian, Gov. Wood, Lambert, Napoleon, Schmidt's Bigarreau, Windsor, Yellow Spanish.				
SOUR CHERRY	6 to 7 Feet	XXXX	\$1.50	\$12.50
VARIETIES: Dyehouse, Early Richmond, Eng. Morello, May Duke, Montmorency, Wragg.				
PLUM	6 to 7 Feet	XXXX	\$1.50	\$12.50
VARIETIES: Abundance, Bradshaw, Burbank, Fellembeg, German Prune, Imperial Gage, Lombard, Red June, Reine Claude, Shropshire Damson, York State Prune				
PEACH	6 to 7 Feet	XXXX	\$1.50	\$12.50
VARIETIES: Belle of Georgia, Carman, Chair's Choice, Champion, Crawford Late, Crawford Early, Elberta, Fitzgerald, Greensboro, Hale, Mt. Rose, Niagara, Rochester, Salway, Smock, Yellow St. John.				
DWARF PEAR	4½ to 5½ Feet	XXXX	\$1.50	\$12.50
VARIETIES: Beurre D'Anjou, Bartlett, Clapp's Favorite, Duchess, Kieffer, Seckel, Sheldon.				
QUINCE	5½ to 6½ Feet	XXXX	\$1.50	\$12.50
VARIETIES: Champion, Meech's Prolific, Orange.				

Dwarf Fruit Trees



McINTOSH RED

Dwarf fruit trees bear larger, better fruit, bear several years earlier and produce more returns for a given space than standard trees. This is all true and there are even more important points. The low, broad heads are within reach so that apples or pears can be easily picked. You can plant dwarf trees in your garden and still grow strawberries and most vegetables. With dwarfs some varieties will bear the first year, all will the second and bear a full crop the fourth year.

Dwarf Apple trees are budded on Paradise or Doucin stock, and Dwarf Pear trees are budded on Quince stock. They will succeed in many places where standard trees fail. In a word, they are the kind of dwarf trees that will put their strength into fruit instead of wood.

10% Discount on all Cash Orders mailed on or before October 15th.

Dwarf Apple Trees

Prices of all Varieties of Dwarf Apple Trees

		Height	Caliper		Each	Hundred
Largest Size	2 Year	4 to 5 Feet	5/8 and up	XXX	\$1.00	\$9.00
Medium Size	2 Year	3 to 4 Feet	1/2 to 5/8	XX	.90	8.00

PARCEL POST. First class 2 1/2 to 3 1/2 ft. Apricot Trees can be sent by parcel post, postage prepaid for 80 cents each, \$7.00 per 10.

Baldwin	Grimes' Golden	Pumpkin Sweet	Wagner
Delicious	Jonathan	Rambo	Wealthy
Duchess	King	Red Astrachan	W. Banana
Early Harvest	Maiden's Blush	R. I. Greening	Yellow Trans.
Fall Pippin	McIntosh	Rome Beauty	Transcendent
Fameuse	Northern Spy	Stayman's Winesap	Hyslop
Gilliflower	Pound Sweet	Sweet Bough	

Dwarf Pear Trees

Prices of all Varieties of Dwarf Pear Trees

		Height	Caliper		Each	Ten	Hundred
Largest Size	2 Year	4 to 5 Feet	5/8 and up	XXX	\$.85	\$7.50	\$55.00
Medium Size	2 Year	3 to 4 Feet	1/2 to 5/8	XX	.80	7.00	50.00

PARCEL POST. First Class 2-3 ft. Dwarf Pear Trees can be sent by parcel post, postage prepaid for 70 cents each, \$6.00 per 10.

Anjou	Clapp's Favorite	Flemish	Lawrence
Bartlett	Duchess	Kieffer	Seckel
			Wilder

Our Prices Are For Stock Delivered. See Page 1

QUINCE TREES

Orange. The best of the older varieties, still more extensively cultivated than any other. Everyone is acquainted with the Orange Quince, a good old variety that never disappoints the planter; good for home use and for market. Its large golden yellow fruit of fine quality is to be seen in more or less quantity in nearly every garden or orchard every season, as it rarely fails to produce a crop. Ripens in October.

Meech's Prolific. Fruit is large, orange yellow, of great beauty and delightful fragrance. Tree a vigorous grower and immensely productive. Ripens between the Orange and the Champion. Last of October.

Champion. A large, late-ripening sort, that produces good and constant crops. One of the best for sections not subject to early frosts. Last of October.

Prices of all Varieties of Hardy Upland Grown Quince Trees

		Height	Caliper		Each	Ten	Hundred
Largest Size	2 Year	4 to 5 Feet	$\frac{3}{8}$ and up	XXX.....	\$1.10	\$10.50	\$80.00
Medium Size	2 Year	3 to 4 Feet	$\frac{1}{2}$ to $\frac{5}{8}$	XX.....	1.05	10.00	75.00
Largest Size	1 Year	3 Feet and up		XXX.....	1.05	10.00	75.00

Fifty at hundred rate, providing not less than ten of any one variety.

PARCEL POST. First Class 2-3 ft. Quince Trees can be sent by parcel post, postage prepaid, for 90 cents each, \$8.00 per 10.

RUSSIAN APRICOTS

Beautiful and delicious fruit. In quality and appearance is between plum and peach, combining qualities of both. Ripening early, together with its delightful flavor makes it one of the most valuable fruits. Tree hardy as the peach. Requires about the same cultivation as the peach or plum. It ships well and commands a good price in any market. For drying and canning, it has no superior. The Russian varieties are quite distinct from the other European sorts; much harder, earlier bearers and productive.

Alexander. Very hardy and immense bearer; fruit large; yellow, flecked with red; very beautiful, sweet and delicious. July.

Alexis. Very hardy and abundant bearer; yellow with red cheek; large to very large; slightly acid, rich and luscious. July.

Moorpark. One of the largest. Orange with red cheek; firm, juicy, with a rich flavor; very productive. August.

Prices of all Varieties of Apricot Trees

		Height	Caliper		Each	Ten	Hundred
Largest Size	2 Year	4½ to 6 Feet	$\frac{1}{16}$ and up	XXX.....	\$1.00	\$9.00	\$70.00
Medium Size	2 Year	3½ to 4½ Feet	$\frac{7}{16}$ to $\frac{9}{16}$	XX.....	.90	8.00	60.00

Fifty at hundred rate, providing not less than ten of any one variety.

Parcel Post. First Class 2½ to 3½ ft. Apricot Trees can be sent by parcel post, postage prepaid for 80 cents each, \$7.00 per 10.

NUT TREES

American Sweet Chestnut is adapted to a great portion of this country. It is valuable as a nut producing tree, timber and ornamental purposes. A well grown American Chestnut that has passed the quarter-century mark is a gracious delight to the eye of the lover of trees, and there is a peaceful, dignified impressiveness about a grove of old chestnut trees that is good to experience.

Price of 4 to 5 ft. trees, \$1.25 each; \$10.00 per 10.

Chestnut, Spanish. A handsome, round-headed tree, producing abundantly, very large nuts that find a ready market at good prices.

Price, 4 to 5 ft., \$1.25 each; \$10.00 per 10.

English Walnut. A fine, lofty-growing tree, with handsome, spreading head; produces large crops of thin-shelled, delicious nuts which are always in demand at good prices. They are fairly hardy and are fruiting here in the Genesee Valley.

Price, 3 to 4 feet, \$2.00 each; \$19.00 per 10.

Black Walnut. The common well-known Black Walnut, the wood of which is most beautiful and valuable. It is very productive in nuts.

Price, 5 to 6 feet, \$1.00 each.

Price, 4 to 5 feet, 75 cents each.

Butternut. A fine native tree producing a large, long nut, which is prized for its sweet, oily, nutritious kernel.

Price, 4 to 5 feet, \$1.00 each; \$9.00 per 10.

Careful Packing together with Scientific Growing and Digging
Crowd Extra Value into Maloney Trees

SMALL FRUITS GRAPES

Price of 2 Year, Vigorous Vines, Except Concord

	Each	Ten	Hundred
2 Year No. 1 Strong Vines	\$.20	\$1.80	\$17.00
Concord15	1.40	10.00

10% Discount on all Cash Orders mailed on or before October 15th.

Every city and country garden should have a dozen or more grape vines. They do admirably trained up the side of any building, or along the garden fences, occupying but little room and furnishing an abundance of the healthiest fruit. Plant about 8 feet apart, by the fence or building. For vineyards, make rows 8 feet apart, 6 to 10 feet in rows.

Lucile. Bright red. It is very hardy and vigorous. Bunches and berries medium to large. This variety is a very good shipper.

Catawba. Dark red when fully ripe. Bunch large, berries medium to large, skin thick, flesh somewhat pulpy, best quality for wine.

Concord. Black. Early. Decidedly the most popular grape in America and deservedly so. Bunch large, shouldered, compact; berries large, covered with a rich bloom, skin tender, but sufficiently firm to carry well to distant markets; flesh juicy, sweet, pulpy, tender; vine a strong grower, very hardy, healthy and productive. For general cultivation the most reliable and profitable variety.

Campbell's Early Black. Strong grower, productive. Its keeping and shipping qualities are equaled by no other grape. Bunch and berry very large, glossy black with blue bloom, sweet and juicy, seeds few and small, parts readily from the pulp. Stands at the head of early black grapes for quality.

Delaware. Red. Bunches small, compact, shouldered; berries rather small, round; skin thin, flesh very juicy, sweet, spicy and delicious.

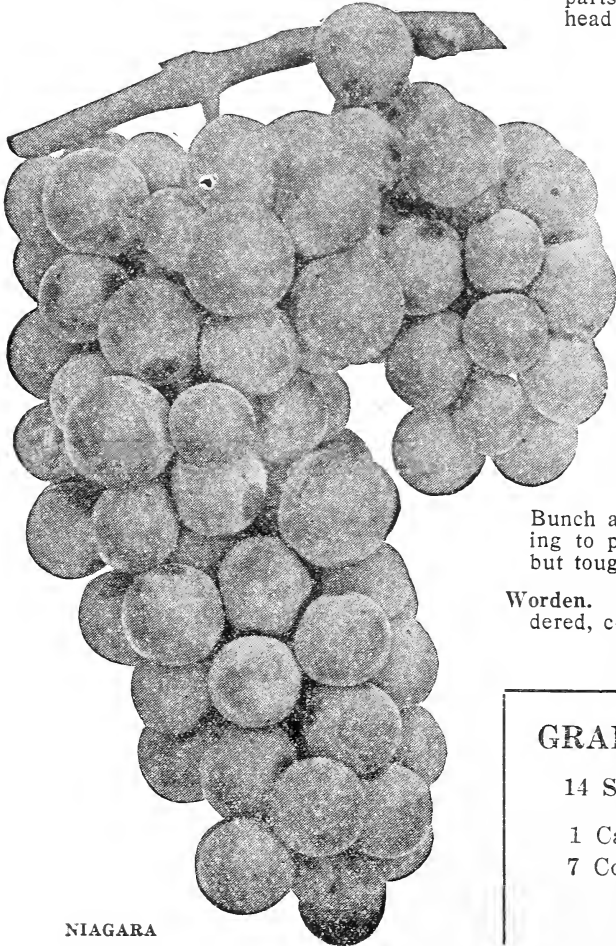
McKinley Early. (New White). Strong grower; bunches large, compact and handsome, berries large and oval like Malaga Grapes; green at first, turning to yellow when fully ripe.

Moore's Early Black. Bunch large, berry large, round with heavy bloom; vine exceedingly hardy. Its earliness makes it desirable for an early market.

Niagara White. Occupies the same position among the white varieties as Concord among the black; the leading profitable market sort.

Bunch and berries large, greenish white changing to pale yellow when fully ripe. Skin thin but tough; quality much like Concord.

Worden. Black. Bunch large, sometimes shouldered, compact; berries very large, skin thin.



NIAGARA

GRAPE COLLECTION NO. 50

14 Strong, 2 Year Vines for \$2.50

1 Catawba 3 Niagara

7 Concord 2 Lucile

1 Campbell's Early

CURRANTS

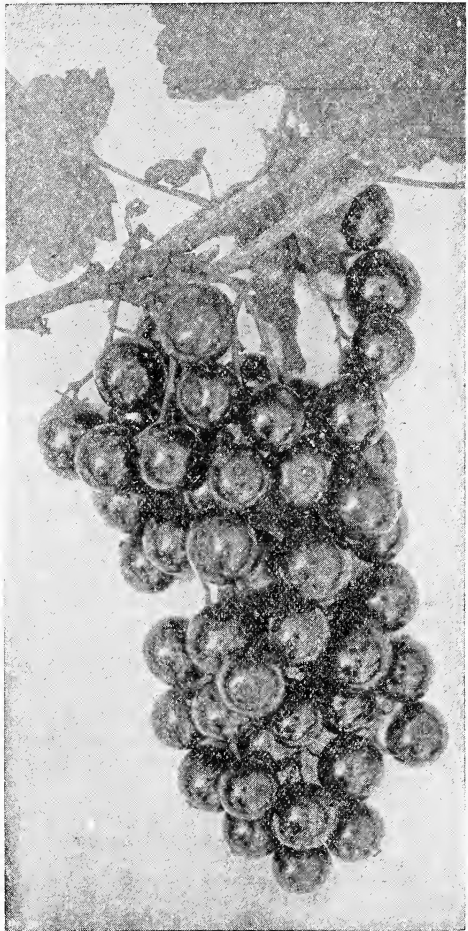
Price of all Varieties of Currant Bushes

	Each	Ten	Hundred
2 Year No. 1 Strong Bushes.....	\$.20	\$1.90	\$18.00

10% Discount on all Cash Orders mailed on or before October 15th.

**States Into Which Currants
Can Be Shipped**

Connecticut	New York
Indiana	Ohio
Michigan	Pennsylvania
	New Jersey



WILDER

Cherry. Bush vigorous, stocky and compact; cluster rather short, with short stems; fruit averages large; color fine, bright red; berry thin skinned, juicy and fine flavored. One of the most productive of the large currants.

Diploma. Large, solid and of good quality, very attractive appearance, both clusters and berries being very large. Vigorous grower and the most productive red currant.

Fay's Prolific. Bush vigorous but not quite so strong a grower as Cherry. Cluster medium to long, with rather long stems. Color darker and berry averages large. Juicy and less acid than Cherry.

Perfection. In color it is a beautiful bright red, a size larger than the Fay; clusters average longer and the size of berries is maintained to the end of the bunch.

Red Cross. A strong growing variety. Cluster long; berry medium to large, bright red; quality good to best. It is exceedingly productive, and the currants are of large size. Further than this, the fruit is far sweeter than ordinary currants.

White Grape. Berries large to very large, averaging large; of very attractive color, mild flavor and good quality.

Wilder. Bush upright, vigorous; clusters above medium length; berries large to very large, averaging large; bright red; excellent, with a mild sub-acid flavor. Ripens early and remains bright and firm until very late. Because of its exceedingly vigorous growth, great productiveness, and high quality we recommend this as one of the best red currants.

Currant Collection No. 51

- 13 Strong, 2 Year Vines for \$2.50
- | | |
|-----------|------------------|
| 6 Wilder | 3 Fay's Prolific |
| 1 Diploma | 3 Cherry |

RED RASPBERRIES



CUTHBERT

Price of 2 Year Strong Plants, Best Selected Varieties

\$1.00 per 25 \$3.50 per 100 \$28.50 per 1000

10% Discount on all Cash Orders mailed on or before October 15th.

Cuthbert. This is a valuable variety well tested throughout the country. It has given good results both for home use and market. Cuthbert is a good vigorous grower and possesses vitality necessary for a popular variety. It yields bountifully of large and beautiful bright red berries, which are easily picked and always command good prices. No fruit grower can afford to omit planting Cuthbert.

St. Regis. (Everbearing). A new acquisition to the Red Raspberry family. Fruit commences to ripen with the earliest and continues on young canes until October. Color bright crimson. Large size. Flesh firm and meaty. Good shipping.

BLACK RASPBERRIES

Price of 2 Year Strong Plants, Best Selected Varieties

\$1.00 per 25 \$3.50 per 100 \$28.50 per 1000

10% Discount on all Cash Orders mailed on or before October 15th.

Cumberland New Black. This new berry is a very valuable acquisition. With its greatly superior size it combines the equally valuable characteristics of great firmness, splendid quality and wonderful productiveness. Fruit very large, firm. Midseason.

Gregg Black. Of good size; fine quality, very productive and hardy.

Kansas Black. This variety is a strong, vigorous grower, standing extremes of drought and cold, and bearing immense crops. Early.

This variety takes the same position among black-caps as Cuthbert does among the red sorts.

Plum Farmer Black. This very large and productive black raspberry is a great favorite for market or home use. It ripens very early and quickly. The fruit is enormously large.

Columbian Purple. A strong grower, unexcelled for productiveness and desirable for canning. Fruit very large, purplish color, rather soft; rich, sprightly flavor.

BLACKBERRIES

Price of 2 Year Strong Plants, Best Selected Varieties

\$1.50 per 25 \$5.00 per 100 \$37.50 per 1000

Eldorado. The vines are very hardy and vigorous, and their yield is enormous. The berries are large, jet black, borne in large clusters and ripen well together; they are very sweet, melting, have no hard core and keep for eight or ten days after picking with quality unimpaired.

Mersereau. Remarkably strong grower, upright, producing stout, stocky canes. An enormous producer of extra size berries, which are brilliant black and retain color; extra quality; sweet, rich and melting, without core. Ripens very early.

Minniewaska. This wonderful, hardy productive, good blackberry has not been forgotten by us, or our old patrons. Its principal points are hardiness, excellent quality, earliness, and continued bearing and productiveness.

Snyder. Extremely hardy, enormously productive; medium size, no hard, sour core; sweet and juicy. Ripens early.

Blowers. Claimed to be the hardiest, most productive, of finest quality and to bring the highest market price.

GOOSEBERRIES

Price for all varieties of Gooseberries named below, strong 2 year bushes, 30 cents each; 10 for \$2.50; 100 for \$22.50.

Downing. Is the largest and best of all native American varieties. The value of Downing lies in its large size, fine quality, beautiful appearance, vigorous growth, and freedom from mildew.

Josselyn. Marvelously productive. The fruit is of large size, color dark red.

States Into Which Gooseberries Can Be Sent

Connecticut	New York
New Jersey	Michigan
Indiana	Ohio
Pennsylvania	

GARDEN ROOTS

Rhubard or Pie Plant

Linnaeus. Large, early, tender and fine. The very best of all.

20 cents each, \$1.75 per 10, \$12.50 per 100.

Asparagus

\$1.00 per 25, \$2.50 per 100, \$12.50 per 1000.

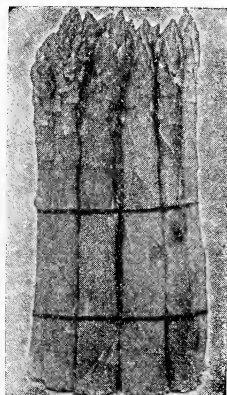
Palmetto. A very early variety, even, regular size and of excellent quality. It has proved entirely satisfactory.

Conover's Colossal. Very large, makes rapid growth; planted mostly by market-gardeners; very productive.

Sage

Holt's Mammoth. Plants of strong growth. Leaves large, borne well above the ground. Of strong flavor and superior quality.

Price of strong 2 year roots, 30 cents each, 10 for \$2.50.



ASPARAGUS

Horse Radish

Hardy roots. Plant in deep rich soil.

50 cents per 10, \$3.00 per 100.

ORNAMENTALS



10% Discount on all Cash Orders mailed on or before October 15th.

American Elm. A natural spreading and drooping tree of our own American meadows and forests. It is very attractive in any suitable location, is entirely hardy and easily transplanted. There are more Elm trees planted along our streets and highways than any other variety. This is on account of its dense green foliage, which spreads out from overhead, covering a suitable space of ground in proportion to the size of the tree, which makes it the finest shade tree in the world.

Price, 10 to 12 feet, \$2.00 each; 10 for \$17.50.

Price, 8 to 10 feet, \$1.50 each; 10 for \$12.50.

Ash, Mountain. A very beautiful tree for ornamental planting. In the early Fall it bears clusters of bright red berries.

Price, 5 to 6 feet, \$1.50 each; 10 for \$12.50.

Bechtel's Crab. When in bloom appears to be covered with delicate pink, perfectly double small roses of delicious fragrance.

Price, 4 to 5 feet, \$1.50 each.

Catalpa Bungei. (Umbrella Catalpa.) Grafted on stems 6 to 8 feet high, it makes an umbrella shaped top without pruning. Perfectly hardy, and flourishes in almost all soils and climates. Leaves large, glossy, heart-shaped. A very desirable ornamental.

Price, 6 to 7 feet, \$2.75 each.

Catalpa Speciosa. One of the most rapid growers. Valuable for timber, fence posts, railroad ties, etc., possesses wonderful durabil-

ity. Large, heart-shaped, downy leaves, and compound panicles of white flowers.

Price, 6 to 8 feet, 60 cents each; 10 for \$5.00.

Price, 8 to 10 feet, 85 cents each; 10 for \$8.00.

Cut-Leaved Weeping Birch. This noble tree is not only the most popular of the weeping trees, but it is decidedly the best. Its tall, slender, yet vigorous growth, graceful branches, silvery white bark and delicately cut foliage, present a combination of attractive characteristics rarely met with in a single tree.

Price, 4 to 5 feet, \$2.00 each.

Horse Chestnut, White Flowering. The well-known European species; very handsome; has magnificent spikes of white flowers. As a lawn tree or for the street it has no superior.

Price 5 to 6 feet, \$2.00 each.

Maple, Ash-Leaved. (Box Elder). A fine, rapid-growing variety, with handsome, light green foliage and spreading head; very hardy; desirable for street planting and succeeds in many sections where other varieties do not thrive.

Price, 8 to 10 feet, \$1.75 each; 10 for \$15.00.

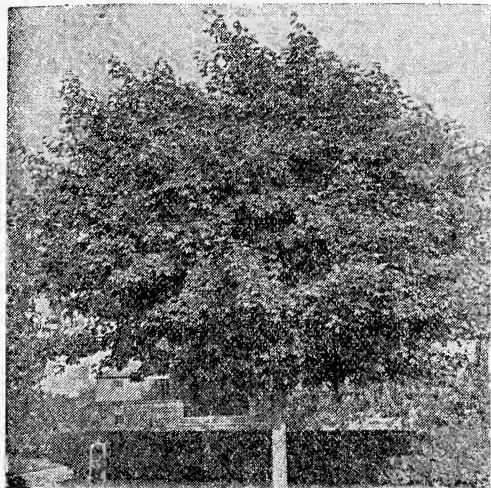
Price, 10 to 12 feet, \$2.00 each; 10 for \$17.50.

Maple, Norway. This is one of the hardiest ornamental shade trees, and one of the most beautiful. It makes more of a wide spreading tree than the sugar maple.

Price, 10 to 12 feet, \$4.00 each; 10 for \$37.50.

Price, 8 to 10 feet, \$3.75 each; 10 for \$35.00.

ORNAMENTAL TREES—Continued



NORWAY MAPLE

Maple, Sugar or Rock. This native tree of ours is a universal favorite for street planting, and desirable everywhere. It is considered a slow grower, but is long-lived.

Price, 8 to 10 feet, \$3.00 each; 10 for \$27.50.

Price, 6 to 8 feet, \$2.50 each; 10 for \$22.50.

Mulberry, Downing. This tree is not alone valuable for the large refreshing berries it bears, but is very handsome as a lawn or street tree. This should be in every yard or garden.

Price, 6 to 8 feet, \$1.00 each; 10 for \$7.50.

Mulberry, Russian. Very hardy, vigorous grower, very productive, fruit black and of medium size.

Price, 5 to 7 feet, 75 cents each; 10 for \$6.50.

Maple, Silver-Leaved or Soft. Foliage bright green above and silvery underneath. An exceedingly rapid grower. Makes a large tree. A very satisfactory tree to plant in large quantities.

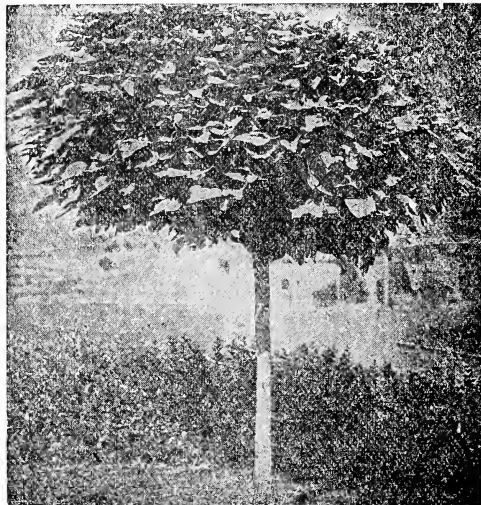
Price, 10 to 12 feet, \$2.50 each; 10 for \$22.50.

Price, 8 to 10 feet, \$2.25 each; 10 for \$20.00.

Maple, Wier's Cut-Leaved. One of the most remarkable and beautiful trees, with cut or dissected foliage. Its growth is rapid, shoots slender and drooping, as graceful as cut-leaved birch.

Price, 8 to 10 feet, \$2.50 each; 10 for \$22.50.

Price, 6 to 8 feet, \$2.00 each; 10 for \$17.50.



CATALPA BUNGEI

Mulberry, Tea's Weeping. The most graceful and hardy weeping tree in existence. Forms a perfect shaped head, with long, slender, willowy branches, drooping to the ground.

Price, 5 feet, \$3.00 each.

Poplar, Carolina. Is one of the most rapid growers among shade trees, frequently growing eight feet during one season and thus making fine shade in two or three years. It is very desirable when planted at the roadside, in parks or along rivers and streams. It has an advantage over other shade trees because it will grow in any kind of soil.

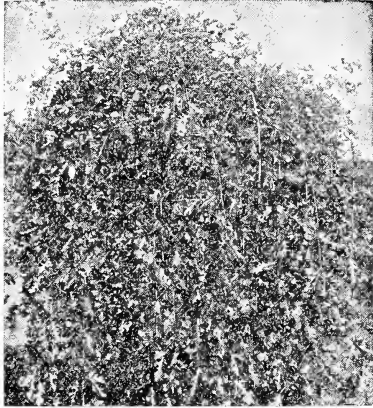
Price, 10 to 12 feet high, \$1.25 each; 10 for \$10.00.

Price, 8 to 10 feet high, \$1.00 each; 10 for \$7.50.

Price, 6 to 8 feet high, \$.75 each; 10 for \$5.00.



WIER'S CUT-LEAVED MAPLE

ORNAMENTAL TREES—Continued**TEA'S WEEPING MULBERRY****AMERICAN ELM**

Poplar, Lombardy. A well-known variety from its tall spire-like form. Where it is desired to mark a boundary line, or where there is an entrance to a driveway, these trees are effective. They transplant safely, grow quickly and for many purposes are attractive and desirable.

Price, 8 to 10 feet, \$1.25 each; \$11.50 per 10.

Price, 6 to 8 feet, \$1.00 each; \$8.50 per 10.

Thorn, Double Pink. Double pink or rose flowers with white tips.

Price for first class Trees, 4 to 5 feet, \$2.00 each.

Thorn, Paul's Double Scarlet. Flowers deep crimson with scarlet shade; very double.

Price of Trees, 4 to 5 feet, \$2.00 each.

Willow, Golden. This willow is especially desirable on account of its golden colored bark with light green leaves. A splendid grower.

Price, 6 to 8 feet, 85 cents each.

Price, 8 to 10 feet, \$1.00 each.

Maloney's Prepaid Express and Freight Offer

We Prepay Transportation Charges on all cash orders of \$7.50 or more received during the entire Fall season of 1926 to all points in the following States: Connecticut, Delaware, Illinois, District of Columbia, Indiana, Maine, Maryland, Massachusetts, Michigan, New Hampshire, New Jersey, New York, Ohio, Pennsylvania, Rhode Island, Vermont, Virginia, West Virginia.

To all other points we will reimburse you for one-half transportation charges.

All orders of \$7.50 and up to \$35.00 from the above States will be sent by EXPRESS PREPAID.

Those of \$35.00 and over will be sent by FREIGHT PREPAID.

Visitors Always Welcomed at Our Nurseries. It will be a pleasure to Show You Through.

HEDGE PLANTS

Barberry Thunbergii. A pretty plant of dwarf habit from Japan. Very graceful and its foliage turns to a beautiful red in the Fall.

Strong Plants, 18 to 24 in., well branched, \$3.50 per 10; \$30.00 per 100.
2 to 3 feet, \$5.50 per 10; \$35.00 per 100.

California Privet. A vigorous growing variety, of fine habit, thick, glossy, nearly evergreen leaves. Of all ornamental hedge plants this is the most highly prized. If cut to the ground one or two years after planting, it makes a very thick hedge right from the bottom, sending up many strong shoots. The leaves are a rich green, and will remain on the plants up to Christmas, and if they are a little sheltered they will keep green almost all winter. Should be planted about eight to ten inches apart to give best results.

Strong Plants, well branched, 18 to 24 inches, \$1.50 per 10; \$7.00 per 100; \$65.00 per 1,000.

Strong Plants, well branched, 2 to 3 feet, \$1.85 per 10; \$8.00 per 100; \$75.00 per 1,000.

Amoor River Privet. (North.) The best for hedge in the North. Has stood twenty degrees below zero, upright growth, foliage similar in appearance to California Privet.

Strong Plants, 18 to 24 in., \$1.75 per 10; \$8.00 per 100; \$70.00 per 1,000.

Strong Plants, 2 to 3 feet, \$2.00 per 10; \$10.00 per 100; \$80.00 per 1,000.

Norway Spruce. This spruce is a rapid grower and is often used as a lawn fence between village or city lots. For hedge purposes Norway Spruce should be planted in single rows two feet apart.

Price 2 to 3 foot trees, \$2.00 each; \$17.50 per 10; \$150.00 per 100, balled and burlapped.

Ibota Privet. Spreading and tall growing. It has dark glossy green foliage. This is a very hardy hedge and succeeds well in cold climate.

Price, 2 Year Strong Plants, well branched, 2 to 3 feet, \$2.50 per 10; \$12.00 per 100; \$100.00 per 1,000.

EVERGREENS

All Evergreens Balled and Burlapped

American Arbor Vitae. A beautiful native tree much used for hedges, screens, singly on lawns and in tubs for porches.

Price, 2 to 3 ft. thrifty trees, \$2.00 each; \$17.50 per 10.

White Spruce. Extremely hardy. On account of its compact habit of growth, regular conical outline and soft bluish green color, it is very desirable for ornamental planting.

Price, 2 to 3 feet, \$2.00 each; \$17.50 per 10.

Irish Juniper. Junipers are handsome evergreens, always neat and clean. This variety grows exceptionally slim. A general favorite.

Price, 2 to 3 feet, \$2.50 each; \$22.50 per 10.

Norway Spruce. There is no evergreen so largely planted as the Norway Spruce. It is indeed a tree possessed of great beauty at all seasons of the year. Norway Spruce can be planted most effectively in groups on the lawn, without any particular order.

Price, 2 to 3 ft., thrifty trees, \$2.00 each; \$17.50 per 10.

HARDY CLIMBING VINES

Ampelopsis Veitchii. (Boston Ivy. This is one of the finest climbers we have for covering walls, as it clings firmly to the smoothest surface, covering it closely with overlapping foliage, giving it the appearance of being shingled with green leaves.

Price of strong 2 year plants, 75 cents each.

Clematis Henryii. A vigorous grower and a free bloomer, producing its large pure white flowers constantly during the summer and early autumn. The best large flowered variety.

Price of strong 2 year plants, 85 cents each.

Clematis Jackmanni. The flowers are large, intense, rich, velvety violet-purple, and are produced in such masses as to form a cloud of bloom. This is the best known Clematis, and should have credit of the great popularity now attending this family of beautiful climbers.

Price of strong 2 year plants, 85 cents each.

Clematis Paniculata. (Sweet-scented Japan Clematis.) Of very rapid growth, quickly covering trellises and arbors with handsome, clean, glossy foliage. The flowers are of medium size, fragrant, pure white, borne in immense sheets in September, when very few other vines are in bloom.

Price of strong 2 year plants, 50 cents each.

Dutchman's Pipe. Brownish flowers, resembling a miniature pipe; splendid for archways or verandas.

Price of strong 2 year plants, \$1.00 each.

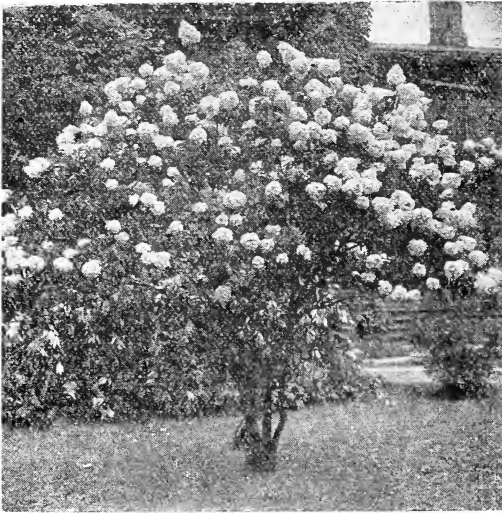
Hall's Japan Honeysuckle. An almost evergreen honeysuckle of the greatest value, being hardy and of strong growth. The flowers are fragrant, of a pure white, changing to yellow.

Price of strong 2 year plants, 50 cents each.

Wistaria, Chinese Purple. A most beautiful climber of rapid growth and producing long pendulous clusters of pale blue flowers.

Price of strong 2 year plants, 50 cents each.

SHRUBS



HYDRANGEA PANICULATA



DEUTZIA, PRIDE OF ROCHESTER

Price, Large Size, 2½ to 3½ Feet, 2 Year	Each \$.60 Ten \$5.50
--	---------------------------------------

10% Discount on all Cash Orders mailed on or before October 15th.

Shrubs for Shady Places. Barberry, Dogwood, Hydrangea Arborescens, Forsythia, Honeysuckle, Snowberry, Snowball, Deutzia, Pride of Rochester, Spiraea Van Houttei, Spiraea Billardi.

Shrubs for Foundation Plantings, and How to Plant Them as to Size:

Dwarf Growing. Barberry, Deutzia Gracilis, Spiraea Anthony Waterer, Spiraea Thunbergii.

Medium Growing. Spiraea, tall varieties; Deutzias, tall varieties; Forsythia, Hydrangea, Weigela, Snowberry.

Tall Growing for Heavy Plantings or Corners. Althea (Bush), Honeysuckle and Lilacs.

Shrubs whose Flowers are succeeded by Ornamental Fruit. Barberry, Elder, Coralberry and Snowberry.

Shrubs with Variegated or Colored Foliage. Elder, Golden and Syringa, Golden.

Shrubs are useful in bringing out the full beauty of a house. Splendid effects can be had by planting an assortment of flowering shrubs on the lawn, not at all difficult to arrange them, for a group planted promiscuously here and there has a splendid effect.

Maloney shrubs are hardy, upland grown at an elevation of 1,500 feet; varieties listed are

the hardiest, most beautiful and lasting, thrive everywhere and need little care or attention when once established. Year after year they grow larger and more beautiful.

Some shrubbery needs more pruning than others. They should all be trimmed enough to keep them shapely.

Hydrangea should be cut back every Spring one-half of the last year's growth. The Altheas can be pruned to suit your own fancy.

Almond—Flowering. A very beautiful shrub covered in May with rose colored blossoms resembling small roses.

Althea. A large shrub, sometimes trimmed into tree form, that blooms freely in August or September, when almost every tree is out of bloom. Vigorous grower and succeeds everywhere. Also called Rose of Sharon. We can furnish double varieties in these colors: Althea Double Purple, Red, Pink and White.

Butterfly Bush. Seems to attract butterflies in large numbers. It produces long, graceful stems which terminate in tapering panicles of beautiful lilac-colored flowers that are of miniature size and borne by the hundreds on a flower head which is often ten inches long. It blossoms from early summer till frost; splendid for cutting.

Beautiful Your Home With Maloney Shrubs and Vines

SHRUBS—Continued

Barberry Thunbergii. A pretty plant of dwarf habit from Japan. Very graceful and its foliage turns to a beautiful red in the Fall. All barberries make very fine hedges.

Calycanthus—(Sweet-scented shrub.) The wood is fragrant; foliage rich; flowers are of chocolate color, having a peculiarly agreeable odor.

Coralberry—Vigorous, quick growing shrub similar to snowberry, except fruit is red.

Deutzia Gracilis. Pure white flowers in June. Two feet high when fully grown.

Deutzia Crenata, Double-Flowering. A hardy, vigorous shrub that does not suffer from insects or diseases and early in the season is fairly covered with very showy double white flowers that on the edge are slightly tinged with rose. Handsome, desirable shrub.

Deutzia Lemoinei. Dwarf, the flowers are large, pure white and produce freely.

Deutzia, Pride of Rochester—Blooms in May. Double, white.

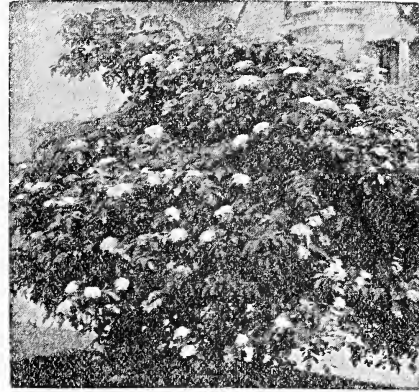
Dogwood, Red. Very conspicuous in winter when branches turn to blood red.

Dogwood, White. Large white flowers in Spring before the leaves appear. Stem and branches turn to blood red in winter.

Dogwood, Yellow. A striking yellow branched form. Very satisfactory for contrast.

Forsythia Fortunei. (Golden Bells.) Deep yellow flowers in great profusion in April.

Golden-Leaved Elder. The best of all the colored shrubs. A plant of this bush in a bed, or a border, or on the lawn, is a conspicuous feature, the foliage being as yellow as gold.



GOLDEN-LEAVED ELDER IN BLOOM

Hydrangea Paniculata Grandiflora. Absolutely hardy; thrives in all soils; grows rapidly and blossoms profusely. The flowers are pure white, afterward changing to pink, and are borne in large pyramidal trusses often more than a foot long and six to eight inches in diameter. Begins to bloom early in August, and continues to bloom for several weeks. Wherever known it is considered to be one of the finest flowering shrubs.

Hydrangea Arborescens Grandiflora Alba. (Hills of Snow.) This hardy American shrub is the very finest addition to this class of plants. The blooms are of the very largest size, of pure snow-white color in July and August, and the foliage is finely finished.

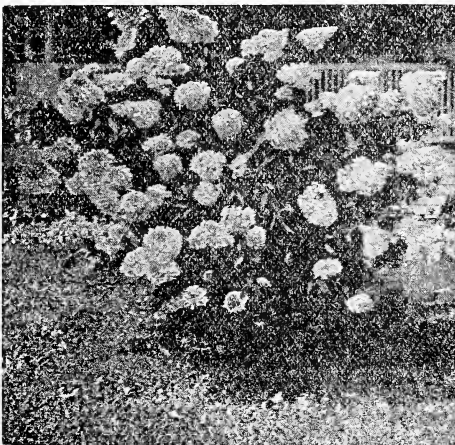
Lilac, Purple. An old favorite; purple flowers.

Lilac, White. A well known favorite.

Mock Orange. Flowers white, deliciously perfumed. Derives its name owing to flowers resembling orange blossoms; a delightful substitute for that noble flower.

Quince, Japan. Dark green foliage, and showy deep, scarlet flowers of good size.

Snowball, Common. A popular shrub. Makes a large bush. Bears balls of pure white flowers in June.



BUSH HYDRANGEA—Paniculata Grandiflora

Shrub Collection No. 60

- 12 Strong, 2 Year Bushes for \$6.50
 2 Deutzia Crenata
 2 Deutzia, Pride of Rochester
 2 Forsythia
 2 Hydrangea P. G.
 2 Spiraea Van Houttei
 2 Spiraea Billardi

SHRUBS—Continued



SNOWBALL COMMON

Snowball, Japan. Erect, compact, with purple tinted corrugated foliage; a solid mass of white in June.

Snowberry. Very ornamental, hardy shrub. Small, pink flowers followed by large, waxy white berries, which remain during winter.

Spiraea Prunifolia. Blooms early, and is very effective. Small, double white flowers.

Spiraea Anthony Waterer. A dwarf variety of great beauty. Its broad flat heads of red flowers continue in perfection all summer.

Spiraea Billardi. A hardy, free growing shrub, During July every branch and twig is tipped with a spike of beautiful blood-red flowers 4 to 6 inches in length.

Spiraea Callosa Rosea. Has large panicles of deep rose-colored flowers in July and August, blooms nearly all summer; fine.

Spiraea Douglasi. Has spikes of beautiful, deep rose-colored flowers in July and August.

Spiraea Van Houttei. This is undoubtedly the best of the spiraeas. White blossoms in May and June.

Syringa, Common. Large, white flowers; very hardy.

Syringa, Golden. Large, deep yellow flowers; bush hardy.

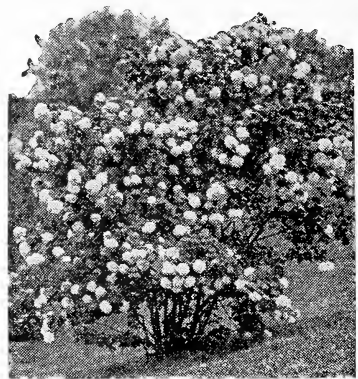
Upright Honeysuckle. (Pink.) Pink flowers which contrast beautifully with the foliage.

Weigela Candida. The flowers are of the purest white, blooming in June, and all summer. Hardy.

Weigela Eva Rathke. Showy, bright red flowers borne freely during the summer.

Weigela Floribunda. Flowers dark crimson, with white stamens somewhat like Fuchsia flowers. Blooms in the Spring and in the Fall.

Weigela Rosea. One of the most charming shrubs in cultivation; it cannot be too highly recommended; the flowers are large and of deep rosy color, and are borne in great profusion.



WEIGELA ROSEA

Hydrangea—Tree Form

Same as Hydrangea P. G. except in tree form, being grafted on a Hydrangea stalk. When in full bloom are very attractive.

3 to 4 feet, \$1.50 each.

SHRUB COLLECTION NO. 65

18 Strong, 2 Year Bushes for \$9.50

3 Weigela Rosea

3 Spirea Douglasi

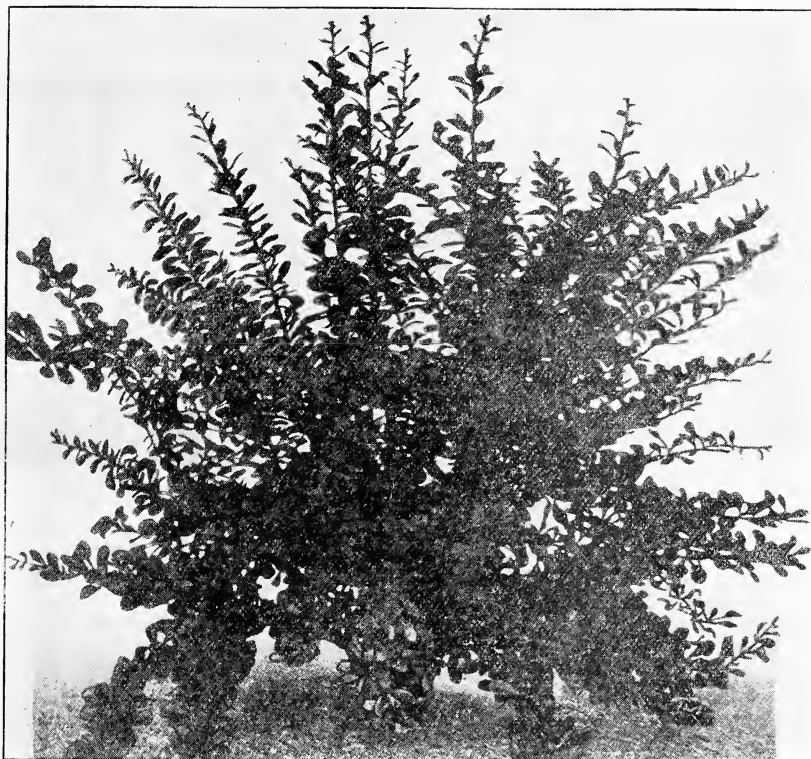
3 Coralberry

3 Barberry

3 Hydrangea Arbor

2 Golden Elder

1 Red-Leaf Barberry



RED-LEAVED JAPANESE BARBERRY

Price, 18 to 24 inches, \$1.00 each; \$8.50 per 10.

RED-LEAVED JAPANESE BARBERRY—It is only once in a lifetime that a really worth-while, outstanding novelty in hardy shrubs is introduced, and in this new Barberry we have such a plant. It is similar in all respects to the green-leaved Japanese Barberry which is so popular for mixing in the shrubbery border, as single specimens, or for planting in clumps on the lawn, as well as for foundation plantings and for hedges, but the foliage of this new variety is of a rich, lustrous, bronzy red, similar to the richest red-leaved Japanese Maples. However, unlike these and other colored shrubs in which the coloring fades or disappears entirely as the season advances, this new Barberry becomes more brilliant and gorgeous throughout the summer, and in the fall its foliage changes to vivid orange, scarlet, and red shades, more brilliant and more effective than in the ordinary Japanese Barberry. In this coloring it is unequalled by any other shrub and is followed by the same brilliant scarlet berries common to the type, which remain on the plant the entire winter. All that is required to develop its brilliant coloring at all seasons is that it be planted in full exposure to the sun.

Yonkers, N. Y.

April 5, 1926.

Dear Sirs:

Your shipment arrived four days ago and in good shape. I feel that acknowledgment is due you for the stock you sent. I expect to deal with you again.

Yours truly,

A. Schussler.

Stow, Mass.

May 11, 1926.

Gentlemen:

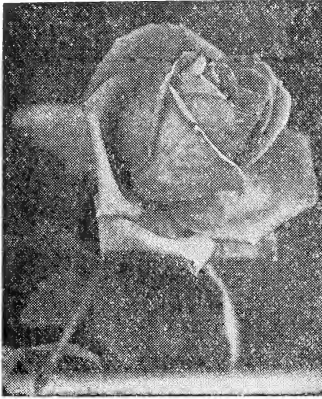
My second box of trees arrived and were in first class shape due to the care your company takes in packing the trees for shipment. They are as fine a lot of trees as we have ever set out.

Yours truly,

Howard Stephenson.

NO RISK DEALING WITH MALONEY'S for we allow five days to examine stock. If not as represented we will replace with satisfactory stock or refund your money.

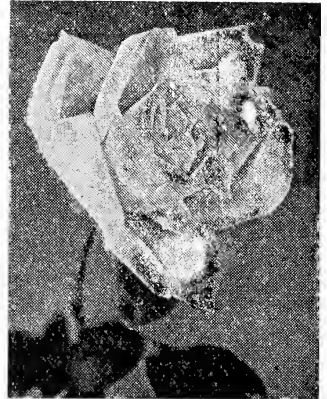
ROSES



PREMIER (Pink)



GEN. MacARTHUR (Red)



KILLARNEY (White)

Price of all Varieties of Rose Bushes

	Each	Ten
Strong Bushes 2 Year No. 1.....	\$.85	\$8.00

10% Discount on all Cash Orders mailed on or before October 15th.

Anne de Diesbach. Carmine, a beautiful shade; very large. A superior garden sort; fragrant; one of the hardiest.

Blanche Roberts. Pure white, large and full, buds very beautiful. A strong grower and a desirable variety.

Baby Rambler. A dwarf (bush). Just the thing for beds and borders and for edging walks. They are bound to take the place of geraniums and other plants which have to be removed each year. You can have them in crimson and white.

Baron De Bonstetten. Flowers large and very double; color rich, dark red, passing to deep velvety maroon. Very fragrant.

Butterfly Rose. Bright pink shading to apricot and gold. Blossoms are large. Very prolific bearer.

Crusader. Upright, vigorous plant, producing freely large crimson flowers, shading from a lighter center to deep outer petals.

Columbia. A beautiful true pink; deepening as it matures to a warm, glowing tone. Its unusual double petalage and substance make it a good summer rose, while the great size, color and long (almost thornless) stems mark it as a superior cutting variety.

Clio. New. The perfection in Hybrid Perpetuals. Of delicate satin blush with a little deeper center. Large, well shaped and very double. Strong, robust, hardy and prolific. A jewel.

Francis Scott Key. Red, shading to cerise. Great profusion of petals, regularly arranged. Sturdy and a good bloomer.

Frau Karl Druschki. Snow Queen. The finest white Hybrid Perpetual rose, with large, full flowers of splendid form. It is marvelous in its beauty in half opened bud and in the pure white of the full opened bloom. It holds its foliage well and is healthy and vigorous and in hardiness it equals any of the Hybrid Perpetuals.

General Jacqueminot. Brilliant crimson; large and fine. Beautiful in bud and a universal favorite.

General MacArthur. Dazzling crimson scarlet, exquisitely perfumed. One of the grandest red roses ever offered, either for cutting or bedding.

Gracilis. Moss rose. Deep pink, well mossed. very beautiful. Keeps quite long after cutting. Bush extremely hardy. Will thrive where many roses fail.

ROSE COLLECTION NO. 200

10 Strong Bushes 2 Year No. 1 for \$7.50

2 Premier Pink

2 Killarney White

2 Gen. MacArthur Red

2 Radiance Red

2 LaFrance Pink

Your Garden is not Complete Without Roses

ROSES—Continued

Gruss an Teplitz. The color is brightest scarlet, shading to deep, rich, velvety crimson. It is very fragrant, the freest grower and most profuse bloomer.

Hugh Dickson. Intense crimson, shaded scarlet; very large, full and magnificent form, with high pointed center; growth upright and vigorous, free and continuous blooming; is the finest of all autumn roses, highly perfumed.

J. L. Mock. A hardy rose, very large, full and fragrant. Petals silvery pink, shading to carmine pink. Vigorous in growth and a continuous bloomer. See back cover for colored reproduction.

Kaiserin Augusta Victoria. A beautiful rose, with elegant, large pointed buds and very large, full double flowers; color, delicate creamy white; deliciously fragrant.

Killarney Pink. One of the most popular of our garden roses. It is perfectly hardy, a robust grower; color of sparkling, brilliant, imperial pink.

Killarney White. Similar to Killarney Pink in size, shape and fragrance but pure white.

La France. Rich satiny peach, changing to deep rose; large and full. A constant bloomer. The sweetest of all.

Los Angeles. Flame pink toned with coral and shaded gold at base of petals. Stems long and flowers large.

Mad. Caroline Testout. One of the most popular of the Hybrid Teas for the garden. The flowers are extra large, and a brilliant, shining pink.

Magna Charta. Pink and Carmine; very large and full; a profuse bloomer. Fragrant. Free grower.

Maman Cochet. This superb rose is well known as a queen among roses. One of the best and most beautiful pink varieties grown, and quite hardy. The flowers are of enormous size, borne on long, strong stems, just right for making bouquets.

Margaret Dickson. New, perfectly hardy and very vigorous. A free summer and autumn bloomer. Flowers white with pale flesh center, of a waxy texture and delightful fragrance.

Marshall P. Wilder. Bright cherry carmine; very fragrant and one of the freest bloomers; vigorous.

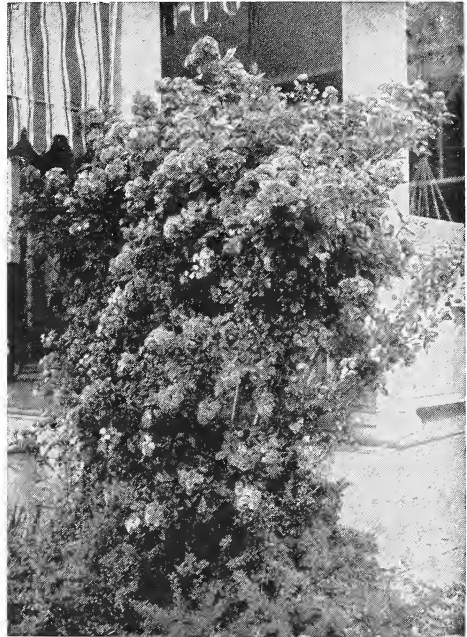
Mrs. Aaron Ward. Buds are deeply cupped, the open flowers delightfully attractive. Color, deep golden orange, shading outward to creamy yellow.

Mrs. Laing. Very free flowering; commences early and continues to bloom profusely until Fall. Delicate pink color. Very fragrant.

Ophelia. Blossoms are large, full and perfect in form and appearance. Attractive light salmon, flesh coloring shading to yellow.

Prince Camile De Rohan. Very dark velvety crimson, changing to intense maroon.

Red Radiance. The wonderful, globular, heavy-



CRIMSON RAMBLER

stemmed "Radiance" duplicated in all respects except color; this sport form being a brilliant crimson.

Paul Neyron. The largest of all. Deep rose color. A free bloomer and vigorous grower.

Premier. Rich, dark pink flowers of good size, fine form, pleasing fragrance.

Sunburst. Flowers superb cadmium yellow, with orange yellow center, large, fairly full, of cupped form. The buds generally borne singly on long, stout stems are long and pointed; opening well.

Ulrich Brunner. Large flowers of light red. Shade peculiar to the Ulrich Brunner. The abundant flowers grow on long stems borne by a plant of very vigorous growth.

Climbing Roses

Price, 2 Year No. 1 Bushes, 70 cents each, 10 for \$6.50.

Baltimore Belle. Pale blush, nearly white. Bloom in clusters.

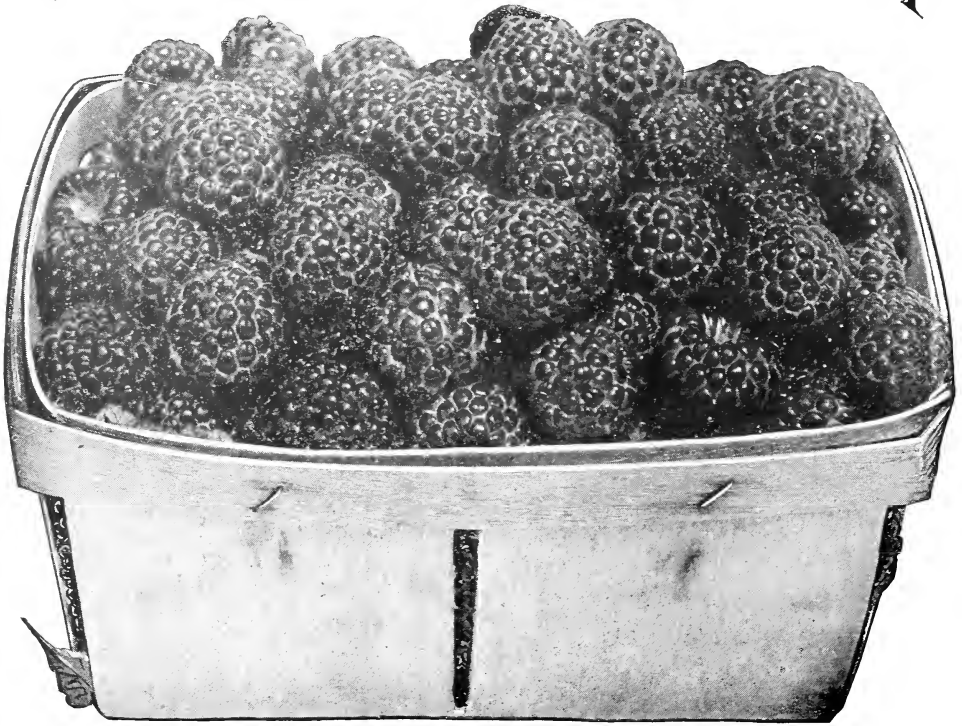
Crimson Rambler. Very vigorous, entirely hardy and extremely prolific. It blooms in clusters. Of a beautiful crimson color and lasts a long time.

Excelsa. General form and type of Crimson Rambler but of far better color, hardiness and habit. Brilliant scarlet-crimson flowers on plants of great vigor and beauty.

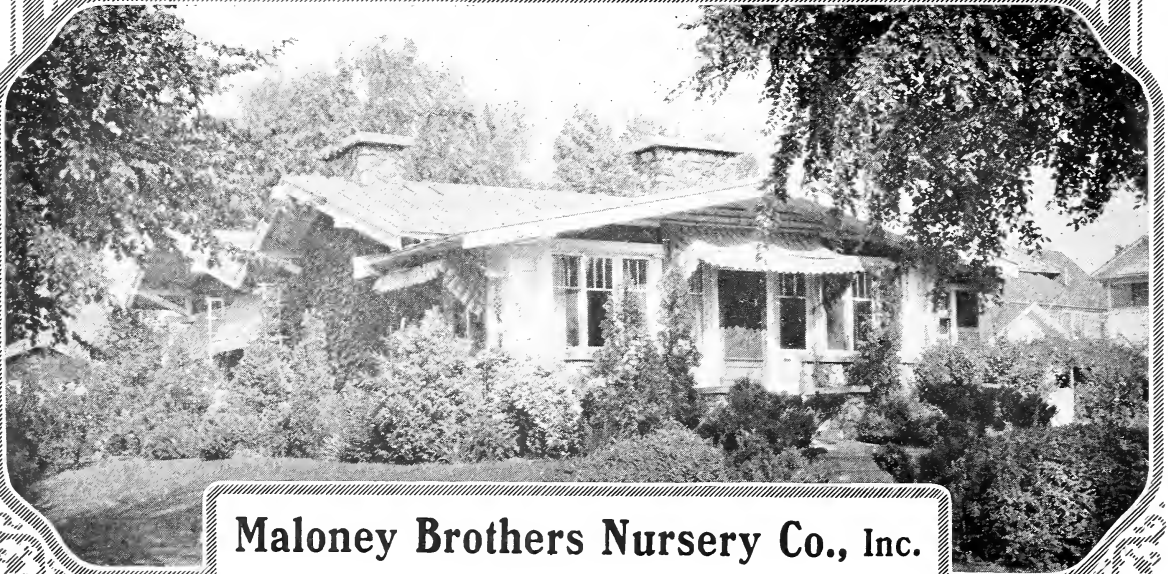
Dorothy Perkins—A most beautiful shell-pink rambler. Hardy. Flowers are double, of large size, unusually two inches across and borne in loose clusters.

FRUIT & SHRUB BOOK

FALL 1926



PLUM FARMER



Maloney Brothers Nursery Co., Inc.

DANSVILLE, N. Y